



---

## Maharashtra Budget 2025 | Maharashtra | 12 Mar 2025

### Why in News?

The Maharashtra Finance Minister presented the **Rs 7-lakh-crore budget for 2025-26** in the Assembly, **emphasizing industrial growth, infrastructure development, and job creation.**

### Key Points

- **Budget Outlay and GSDP Share:**
  - The total budget outlay constitutes 14.17% of the estimated **Gross State Domestic Product (GSDP)** of Rs 49.4 lakh crore.
  - This is lower than the 14.8% of GSDP allocated in the 2024-25 Revised Estimates, making this budget smaller than the previous one.
- **Fiscal Deficit Reduction:**
  - The government has **lowered the fiscal deficit to 2.7% of GSDP**, down from 2.9% in the 2024-25 Revised Estimates, by budgeting lower spending.
- **Industrial Policy and Job Creation:**
  - The Finance Minister announced plans to introduce an **industrial policy for 2025**.
  - The policy aims to attract Rs 40 lakh crore in investments and generate 50 lakh jobs over the next five years.
- **Decline in Capital Expenditure:**
  - Capital expenditure is projected to fall by 14.5% in 2025-26, from Rs 1,09,031.5 crore in the current fiscal to Rs 93,165.5 crore.
  - Its share in the total budget outlay has been reduced to 13.3%.
- **Ladki Bahin Yojana Allocation:**
  - The scheme has been allocated Rs 36,000 crore, which is 21% lower than the current fiscal's allocation.
- **Government's Five-Point Agenda:**
  - The State Chief Minister stated that the budget is based on **five key focus areas:**
    - Agriculture
    - Industry
    - Infrastructure
    - Employment
    - Social Welfare

### Ladki Bahin Yojana

- The scheme aims to **rehabilitate, economically develop, and empower women** aged 21 to 65 years by disbursing Rs 1,500 per month.
  - Up to December 2024, the total disbursement under the scheme amounted to Rs 17,505.90 crore.
- 
-

# New Frog Species in Maharashtra | Maharashtra | 12 Mar 2025

## Why in News?

Researchers from Maharashtra have discovered a new endemic frog species, '*Minervarya ghatiborealis*' at Mahabaleshwar.

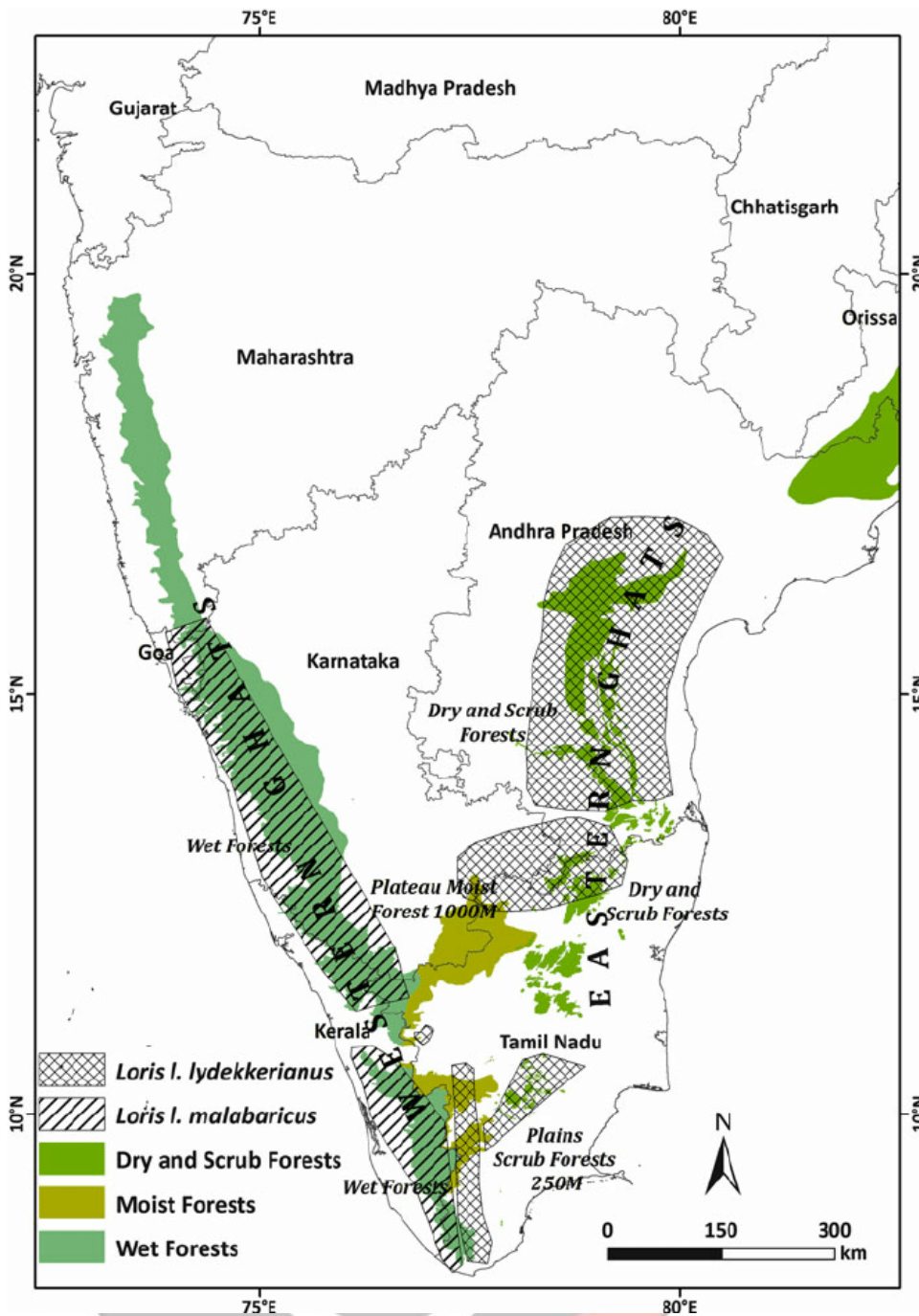
- They included it in the genus **Minervarya**, commonly known as the '**Cricket frog**'. The international journal **Zootaxa** has published their study on this species.



## Key Points

- **Etymology and Meaning:**
  - The species' name combines the **Sanskrit word 'Ghati' (Western)** and the **Latin word 'Borealis' (Northern)**.
  - It translates to '**from the north-western Ghats**', reflecting its habitat.
- **Distinctive Features:**
  - Frogs of the *Minervarya* genus have **parallel lines on their abdomens**, making them easy to identify.
  - They **nest near standing water or small springs**.
  - Their **calls resemble nightingale sounds**, a unique trait among frogs.
    - **Male frogs** of this species produce **distinct breeding calls**, which set them apart from other *Minervarya* species.
- **Conservation Importance:**
  - The need for continuous conservation efforts in **the Western Ghats** was emphasized.
  - **The Mahabaleshwar Plateau** is now recognized as a key area for endemic species, requiring enhanced conservation measures.

## The Western Ghats



▪ **About:**

- These are the **mountain ranges** running parallel **along the western coast of India starting from Gujarat and ending in Tamil Nadu.**
- Gujarat, Maharashtra, Goa, Karnataka, Tamil Nadu and Kerala are the six Indian states covered by Western Ghats.
- The mountain range is also a **“Hottest Hotspot” of biodiversity.**
- The Ghats are often called the **Great Escarpment of India** and are also a **UNESCO World Heritage Site.**
- **High Biodiversity and Endemism** are special features of Western Ghats along with the presence of Evergreen Forests.

▪ **Significance:**

- The Ghats **influence the Indian monsoon weather patterns** that mediate the warm tropical climate of the region.
- They **act as a barrier to rain-laden monsoon winds** that sweep in from the south-west.
- Western Ghats are **home to tropical evergreen forests, as well as to 325 globally**

**threatened species.**

- Plateaus **are the dominant landscapes in the Western Ghats**, significant because of the predominance of endemic species.

---

PDF Refernece URL: <https://www.drishtias.com/statepcs/13-03-2025/maharashtra/print>

