



Economic Survey 2024-25

For Prelims: [Economic Survey](#), [Parliament](#), [Union Budget](#), [Chief Economic Adviser](#), [International Monetary Fund](#), [Inflation](#), [Russia-Ukraine war](#), [Gross Domestic Product](#), [Current account deficit](#), [Non-Performing Assets](#), [Reserve Bank of India](#), [Initial Public Offerings](#), [Red Sea](#), [Vadhavan Mega Port](#), [National Infrastructure Pipeline](#), [BharatNet](#), [Swachh Bharat Mission](#), [Gaganyaan](#), [Carbon sink](#), [Gini coefficient](#), [Foreign Direct Investment](#)

For Mains: India's Economic Growth, Economic Survey, Fiscal Policy and Financial Stability, Challenges to Economic Growth.

Source: [PIB](#)

Why in News?

The Finance Minister Nirmala Sitharaman tabled the [Economic Survey 2024-25](#) in [Parliament](#). It provides a roadmap for reforms and growth, setting the stage for the [Union Budget 2025](#).

Economic Survey

- The Economic Survey is an annual report presented by the government before the [Union Budget](#) to assess India's economic condition.
- Prepared by the **Economic Division of the Ministry of Finance** under the [Chief Economic Adviser's](#) supervision, it is tabled in both houses of **Parliament** by the Union Finance Minister.
 - The survey **assesses economic performance, highlights sectoral developments**, outlines challenges and provides an economic outlook for the coming year.
 - The Economic Survey was first presented in **1950-51 as part of the budget** and became a separate document from the **Union Budget in 1964**, tabled a day before the budget.

What are the Key Highlights of the Economic Survey 2024-25?

- **State of the Economy:**
 - **Global Economy:** The [International Monetary Fund \(IMF\)](#) projected 3.2% global growth in 2024 (3.3% in 2025), with manufacturing slowing due to supply chain disruptions, while services remain strong.
 - [Inflation](#) eased globally, yet **services inflation remained persistent**, leading to **divergent monetary policies** across central banks.
 - **Geopolitical Uncertainties:** [Russia-Ukraine war](#) and [Israel-Hamas conflict](#) have impacted trade, energy security, and inflation.
 - [Suez Canal disruptions](#) forced ships to reroute via the [Cape of Good Hope](#), increasing freight costs and delivery times.
 - **India's Economy:** India's [Gross Domestic Product \(GDP\)](#) is projected to grow

between 6.3-6.8% in FY26 (2025-26), with real [Gross Value Added \(GVA\)](#) estimated at 6.4% in FY25 (2024-25).

- **Sector-Wise Performance:**

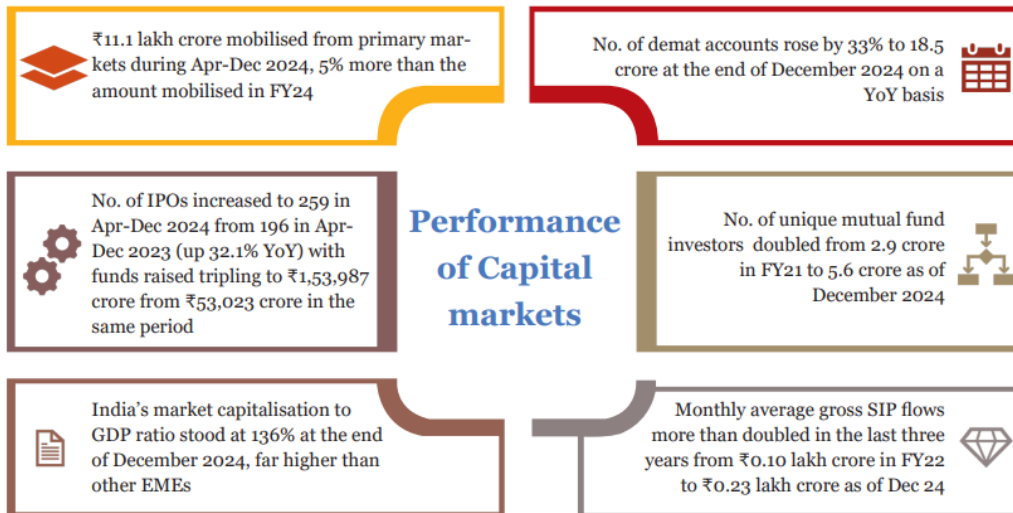
- **Agriculture: 3.8% growth** in FY25, driven by record [Kharif production](#) and **strong rural demand**.
- **Industry & Manufacturing: 6.2% growth** in FY25, with **manufacturing slowing** due to **weak global demand**.
- **Services: Fastest-growing sector at 7.2%** in FY25, led by [Information technology \(IT\)](#), **finance**, and **hospitality**.
- **External Sector: Overall exports (merchandise+services) grew by 6% (YOY)** in the first nine months of FY25. **Services sector by 11.6%** during the same time.
 - **Merchandise exports grew 1.6%**, while **imports rose 5.2%**, widening the [trade deficit](#).
 - India remained the **top global recipient of remittances**, helping contain the [Current account deficit \(CAD\)](#) at 1.2% of GDP.



- **Monetary and Financial Sector Developments:** [Gross Non-Performing Assets \(GNPA\)](#) of [Scheduled Commercial Banks \(SCBs\)](#) dropped to a 12-year low of 2.6% in 2024, with net NPAs at 0.6%.

- **Return on Assets (RoA)** rose to **1.4%**, and **Return on Equity (RoE)** improved to **14.1%** (Sep 2024).
- **Reserve Bank of India (RBI) Financial Inclusion Index** increased from **53.9 (2021)** to **64.2 (2024)**, supported by **Regional Rural Banks (RRBs)**.
 - **RBI maintained the repo rate at 6.5%**, while reducing the CRR to **4%**, injecting **Rs 1.16 lakh crore** into the system.
 - The **money multiplier** rose to **5.7**, reflecting increased liquidity.
- **Capital markets** mobilized **Rs 11.1 lakh crore** in primary markets (Apr–Dec 2024), a **5% increase** over FY24. **Initial Public Offerings (IPO)** tripled their fundraising to **Rs 1.53 lakh crore**.

Developments in capital markets

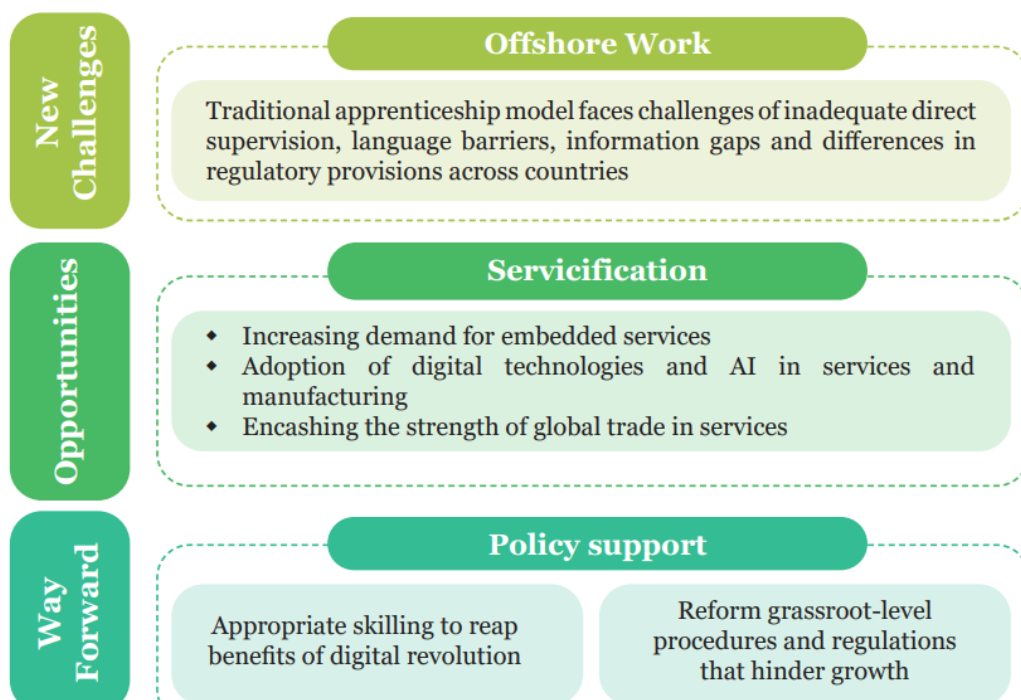


- **Development Financial Institutions (DFIs)** like **National Bank for Financing Infrastructure and Development (NaBFID)** and **India Infrastructure Finance Company Limited (IIFCL)** financed infrastructure projects, with NaBFID sanctioning **Rs 1.3 lakh crore** in loans.
- **External Sector: India's external sector remained resilient. Total exports (merchandise + services) grew by 6%, reaching USD 602.6 billion.**
 - Imports also increased by 6.9% to USD 682.2 billion, reflecting strong domestic demand.
 - Global trade faced challenges due to **rising trade policy uncertainty and disruptions in key shipping routes**, such as the **Red Sea** and the **Panama Canal drought**, leading to **higher costs and longer delivery times**.
 - A shift towards **friend-shoring** and **near-shoring** was observed, as countries **prioritized trade within geopolitical alliances**.
 - **Foreign Portfolio Investments (FPIs):** The **FPIs** fluctuated due to global uncertainties, though India's **strong economic fundamentals kept overall inflows positive**.
 - **Foreign Exchange Reserves: USD 640.3 billion** (Dec 2024), **covering 90% of external debt** (USD 711.8 billion as of Sep 2024), ensuring **macroeconomic stability and resilience against external shocks**.
- **Prices and Inflation:**
 - **Global Inflation Trends:** Inflation peaked at **8.7% in 2022**, driven by **supply chain disruptions**, but fell to **5.7% in 2024** due to **monetary tightening**.
 - **Domestic Inflation Trends:** **Retail inflation** eased from **5.4% in FY24** to **4.9% in FY25**, but **food inflation** rose from **7.5% to 8.4%**, driven by vegetables (tomatoes, onions) and pulses, despite price stabilization efforts.

- Supply chain issues and **weather disruptions** kept **Consumer Price Index (CPI) volatility high**.
- **Core inflation** hit a **10-year low**, with declining service and fuel price inflation.
 - The **RBI revised FY25 inflation** from **4.5% to 4.8%**, expecting **4.2% in FY26**, while the **IMF forecasts 4.4% in FY25 and 4.1% in FY26**, assuming stable conditions.
- **Medium-Term Outlook: The IMF projects India to become a USD 5 trillion economy by FY28 and USD 6.3 trillion by FY30, with a nominal GDP growth rate of 10.2% (FY25-FY30).**
 - To reach its **Viksit Bharat 2047** goal, India must grow at 8% annually for the next two decades.
 - However, global challenges such as geo-economic fragmentation, trade restrictions, and **China's dominance** in manufacturing and energy transition pose risks to supply chains and investment flows.
 - The IMF forecasts India's real GDP growth at 6.5% annually (FY26-FY30), with the CAD expected to rise to 2.2% of GDP by FY30.
 - The **rupee is projected to depreciate** mildly at 0.5% per year, indicating improved economic stability compared to previous decades.
- **Investment and Infrastructure: The capital expenditure (Capex) growing at 38.8% Compounded Annual Growth Rate (CAGR) (FY20-FY24).**
 - The government has launched multiple initiatives, including the **National Infrastructure Pipeline**, and the **National Monetisation Pipeline**.
 - **Key Developments:**
 - **Railway connectivity: 2031 km of railway network** commissioned (Apr-Nov 2024), **17 new Vande Bharat trains** introduced.
 - **Infrastructure: National Highway construction reached 6,215 km (Bharatmala)**, 619 UDAN air routes (**Regional Connectivity Scheme**).
 - **Port capacity grew under Sagarmala**, with the launch of projects like **Vadhavan Mega Port**.
 - **Energy: Total installed power capacity reached 456.7 GW (renewables at 209.4 GW (47% share)).**
 - **Connectivity: 5G covers 779 districts**, and **BharatNet** expanded fiber to **2.14 lakh Gram Panchayats**.
 - **Rural and Urban Development: Pradhan Mantri Awas Yojana (PMAY) sanctioned 1.18 crore houses**, and **Jal Jeevan Mission** reached **15.3 crore households (79.1%)**.
 - **18,374 villages electrified and 2.9 crore households connected under Deen Dayal Upadhyaya Gram Jyoti Yojana (DDUGJY) and SAUBHAGYA**.
 - Under **Swachh Bharat Mission (Phase II)** in 2024, 1.92 lakh villages declared **ODF Plus**, making a total of 3.64 lakh ODF Plus villages by 2024.
 - **Space assets: India operates 56 active space assets**, with **Space Vision 2047** targeting missions like **Gaganyaan** and **Chandrayaan-4**.
- **Industry & Manufacturing: The industrial sector expected to grow by 6.2% in FY-25 (first advance estimates), driven by robust growth in electricity and construction.**
 - The government has been actively promoting **Smart Manufacturing** and **Industry 4.0**, supporting the establishment of **SAMARTH Udyog centres**.
 - Key sectors saw growth, with **steel production up 3.3% (Apr-Nov FY25)** and **electronics output reaching Rs 9.52 lakh crore, with 99% of smartphones made domestically**, drastically reducing India's dependence on imports.
 - As per the **WIPO Report 2022**, India ranks **sixth among the top 10 patent filing offices** globally, with **resident filings accounting for over half of all submissions (55.2%)**—a first for the country.
 - The **MSME sector employs 23.24 crore people**, with **2.39 crore businesses formalized** under **Udyam Assist**.
 - To provide equity funding to MSMEs with the potential to scale up, the government launched the **Self-Reliant India Fund**.

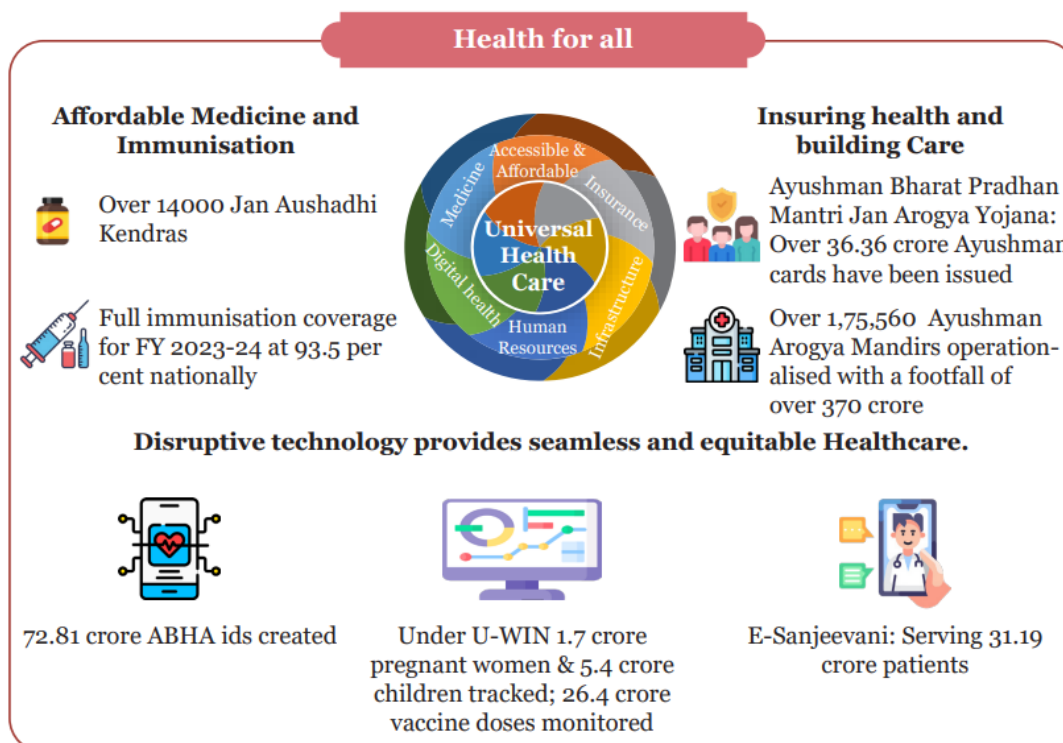
- **Services: India's services sector contributes 55% to GVA in FY25, up from 50.6% in FY14, employing 30% of the workforce and driving manufacturing growth through servicification.**
 - India ranks **7th** in global services exports (4.3% share).
 - Information and **computer-related services** grew at **12.8% CAGR (FY13-FY23)**, increasing their GVA share from 6.3% to 10.9%.
 - **Railway passenger traffic grew 8%, freight movement increased 5.2% (FY24).**
 - Tourism rebounded, contributing **5% to GDP (FY23)**, and real estate sales hit an 11-year high in H1 FY25.
 - The [telecom sector](#), with 1.18 billion subscribers, leads in global mobile data consumption.

Challenges, opportunities and way forward for services



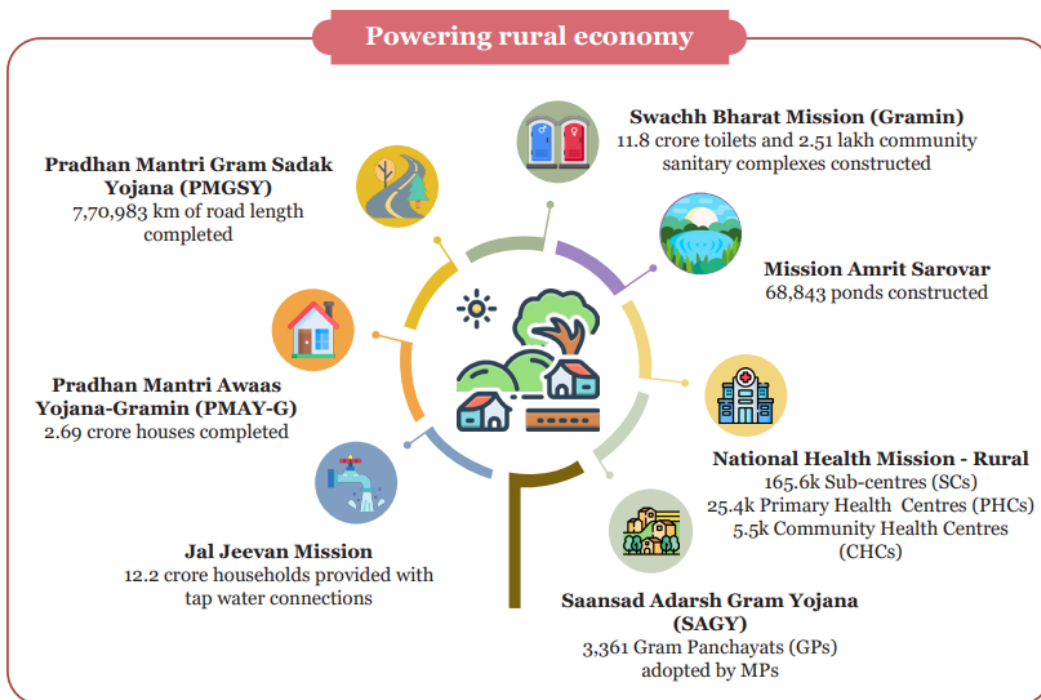
- **Agriculture and Food Management:** India's [agriculture sector](#) contributes 16% to GDP (FY24), employing **46.1% of the population**, with **5% annual growth (FY17-FY23)**.
 - **Kharif foodgrain production hit 1,647 LMT (2024), up 89.37 LMT YoY**, while [fisheries](#) (184 LMT) and [livestock](#) (CAGR 12.99%) outpaced traditional farming.
 - **Minimum Support Price for Arhar and Bajra increased by 59% and 77% (FY25)** to ensure farmer profitability.
 - **55% of India's net sown area is irrigated**, with severe drought risks in **two-thirds of farmland**.
 - **Kisan Credit Cards (KCC): 7.75 crore accounts.**
 - **PM Fasal Bima Yojana (Crop Insurance): 4 crore farmers enrolled**, covering 600 LMT hectares in FY24.
 - **e-NAM platform linked 1.78 crore farmers, 2.62 lakh traders** (Oct 2024) for better price discovery.
 - **Food Security & Processing: Pradhan Mantri Garib Kalyan Anna Yojana (PMGKAY) provides free food grains to 80 crore people.**
 - **Food processing** exports reached USD 46.44 billion (FY24), with 23.4% share in agri-food exports (**11.7 % of India's total exports**).
- **Climate & Environment: Climate adaptation spending rose from 3.7% to 5.6% of GDP (FY16-FY22).**
 - The **Lifestyle for the Environment (LiFE) initiative** promotes sustainability, with potential global savings of **USD 440 billion by 2030** through reduced consumption and lower prices.
 - **Renewable Energy & Emissions: 46.8% of India's power capacity is non-fossil** (target **50% by 2030**).

- **Forest carbon sink** increased by 2.29 billion tonnes CO₂ (2005-2023).
- **Climate Finance & International Cooperation:** [Conference of Parties 29](#) failed to secure adequate climate funds, with a USD 300B annual goal vs. USD 5.1 to 6.8T needed by 2030.
 - India issued USD 20,000 crore in **Sovereign Green Bonds** in FY24 to fund green projects.
- **Sustainable Development & Resilience:** [Mangrove Initiative for Shoreline Habitats & Tangible Incomes \(MISHTI\)](#) initiative restoring 22,560 hectares of mangroves across 13 states and UTs.
 - Water conservation via [AMRUT 2.0](#) (3,078 water body rejuvenation projects approved).
 - **PM Surya Ghar** (7 lakh rooftop solar systems installed; goal: 1 crore households).
- **Energy Security & Transition:** [Coal](#) remains India's primary energy source, with 65,290 MW supercritical coal plants for efficiency.
 - **Nuclear, hydrogen, and bioenergy** programs expanding for a balanced transition.
- **Social Sector: India's social sector spending grew at 15% CAGR (FY21-FY25), reaching Rs 25.7 lakh crore in FY25.**
 - The **Gini coefficient** for rural areas declined to 0.237 in 2023-24 from 0.266 in 2022-23, and for urban areas, it fell to 0.284 in 2023-24 from 0.314 in 2022-23.
 - **Education & Skill Development: Education spending rose 12% CAGR to Rs 9.2 lakh crore, reducing dropout rates to 1.9% (primary) and 14.1% (secondary), while higher education enrolment increased 26.5% (2014-2022), pushing Gross Enrolment Ratio (GER) to 28.4%.**
 - **Healthcare & Social Security:** Healthcare spending surged 18% to Rs 6.1 lakh crore, with [Ayushman Bharat Pradhan Mantri Jan Arogya Yojana \(AB PM-JAY\)](#) saving Rs 1.25 lakh crore in medical expenses.



- **Welfare:** [Pradhan Mantri Garib Kalyan Anna Yojana \(PMGKAY\)](#) provides free food grains to 80 crore people, covering 84% of households via ration cards.
 - Fiscal policies helped reduce inequality, with bottom 5% rural and urban consumption

rising by 22% and 19%.



- **Employment and Skill Development:** India's [unemployment rate](#) declined from 6% (2017-18) to 3.2% (2023-24), with [labour force participation \(LFPR\)](#) rising to 60.1%.
 - The working-age population (15-59 years) reached 923.9 million (2026 projection), offering a [demographic dividend](#) (26% of the population aged 10-24).
 - The female LFPR grew from 23.3% (2017-18) to 41.7% (2023-24), driven by rural women's participation.
 - [Self-employment](#) rose to 58.4%, while regular wage jobs remained at 21.7%.
 - Employment Trends: Formal sector jobs surged, with [Employees' Provident Fund Organisation \(EPFO\)](#) net payroll additions doubling from 61 lakh (FY19) to 131 lakh (FY24).
 - Skill Development & Job Creation: 73,151 startups with women directors under [Startup India](#).
 - [Skill India](#) and [Mudra Yojana](#) supported entrepreneurship and vocational training.
 - The growing [digital economy](#) and [renewable energy sectors](#) are driving job creation, vital for Viksit Bharat.
 - The government is enhancing skills for global trends like AI and climate change. Initiatives like the [PM-Internship Scheme](#) are boosting employment and self-employment.
- **Labour in the AI Era:** [Artificial Intelligence \(AI\)](#) presents both opportunities and risks for labour markets, with **75 million global jobs at risk (ILO 2024)** and **300 million full-time roles exposed (Goldman Sachs)**.
 - India's AI market is set to grow at 25-35% CAGR by 2027 (NASSCOM), making workforce upskilling, regulatory oversight, and human-AI collaboration crucial for a balanced transition.

What are India's Economic Challenges According to the Economic Survey 2024-25?

- **Global:**
 - **Geopolitical Risks:** Conflicts like the **Russia-Ukraine war and Red Sea**

- disruptions** impact trade, energy prices, and supply chains.
- **Global Trade Slowdown:** **Protectionism**, **supply chain realignments** affect India's export competitiveness.
 - **Financial Market Volatility:** **Interest rate fluctuations in the US and European Union** may cause **capital outflows**, impacting India's **foreign exchange reserves** and **currency stability**.
- **Inflation:**
- **Persistent Food Inflation:** Create inflationary pressures, despite stable core inflation.
 - **Climate Impact:** Erratic **monsoons, droughts, and extreme weather events** affect **food security and farm incomes**.
- **Investment & Infrastructure Bottlenecks:** While **public Capex grew at 38.8% CAGR (FY20-FY24)**, **private investment remains cautious** due to **global uncertainties and regulatory concerns**.
- **Logistics costs remain high (13-14% of GDP)**, limiting industrial competitiveness despite **National Logistics Policy efforts**.
 - **Lack of planned urbanization** results in **traffic congestion, inadequate public transport, and rising housing costs** in major cities.
 - **Smart City** and **urban transport projects face delays** in execution due to regulatory hurdles and financing gaps.
- **Employment & Skilling Gaps:**
- **Jobless Growth Concerns:** India faces a **critical challenge of jobless growth**, with economic growth outpacing job creation, largely due to a focus on high-skill, low-employment sectors, premature deindustrialisation, and skill mismatches.
 - **Low LFPR: Female LFPR in India is 41.7% (FY25)**, still below the global average of over 50%.
- **Fiscal & Financial Sector Risks:** **Several states face high debt burdens** due to rising subsidies, limited revenue growth, and dependency on central transfers.
- **Rising unsecured lending risks** pose a challenge for **NBFCs and fintech lenders**, requiring better regulation and monitoring **and cyber threats remain**.
 - **Slow credit penetration to MSMEs**, despite digital lending growth, hinders small business expansion.
- **External Sector:** While **Foreign Direct Investment inflows grew 17.9% YoY**, **higher repatriation** and **disinvestment** remain a concern.
- **Export Dependency on IT & Services (70% of services exports rely on IT & business services)**, increasing vulnerability to global demand shocks.
- **Climate Change & Energy Transition:** India faces energy transition challenges due to **grid stability issues**, high storage costs, and slow renewable adoption.
- Dependency on **Coal remains high**, delaying the shift to clean energy.
 - Climate risks, extreme weather, and inadequate global climate finance further hinder sustainable growth.

Challenges and priorities for India

Challenges

High economic growth to achieve the status of a developed country by 2047 and also become net zero by 2070

International support on finance and technology is highly inadequate. India meets its requirements largely from its own budgetary sources. A small NCQG of USD 300 billion has been set

Follow a low-carbon development path while ensuring job creation and affordable energy security for all, given the limitation of renewable energy

Priorities

Bringing adaptation to the forefront given higher vulnerability to climate change

Reducing emission intensity of its indispensable thermal power through adoption of super-critical (SC), ultra-super-critical (USC) and Advanced Ultra Super Critical (AUSC) technologies

Also focus on environmental sustainability through moderation of consumption and production habits as envisaged under Mission LiFE

- **EoDB reforms:** Despite [Ease of Doing Business Reforms \(EoDB\) reforms](#), **labour laws, land acquisition, and tax complexity** still hinder **MSMEs and startups**.
 - India's R&D spending **remains low at 0.64% of GDP**, affecting innovation and tech competitiveness.
- **Effect of AI:** **AI's reliability is still unproven, leading to biases in hiring, predictive policing, and automation failures.**
 - [Energy demand for AI data centers](#) may reach India's **total electricity consumption (1,580 terawatt-hours)** (Bloomberg, 2024).
 - **Indian IT, Business process outsourcing (BPO), and banking sectors face high AI disruption, particularly in low-value service jobs.**

Challenges to scaling AI



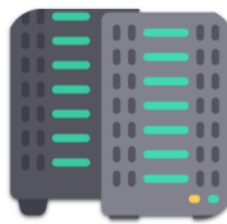
Practicality

Translating breakthroughs into practical, widely adopted applications remains challenging, as AI currently shows experimental and uneven utility



Reliability

Ensuring AI reliability is critical for real-world applications, as failures in key industries like autonomous vehicles or healthcare can prove problematic



Infrastructure

AI at scale requires substantial investments in infrastructure, including data centres, clean data pipelines, and computational resources



Resources

Large Models are resource intensive, requiring high energy consumption, dependency on scarce minerals for hardware, and finance, making sustainable innovation essential

Way Forward

- **Managing Geopolitical Uncertainties: Diversify trade partners and strengthen regional agreements** (e.g., [Indo-Pacific Economic Framework](#), [India-Middle East-Europe Corridor](#)) to reduce dependence on conflict-affected areas.
 - **Enhance domestic energy security** by investing in [strategic petroleum reserves](#) and renewable alternatives.
 - **Expand domestic manufacturing & supply chain resilience** through [Production Linked Initiative' \(PLI\) schemes](#) and [allow 100% FDI](#) in key sectors.
- **Controlling Inflation: Strengthen food supply chains with better storage, logistics, and real-time price monitoring to control food inflation.**
 - Encourage private investment via tax incentives, land & labour reforms, and easing compliance for businesses.
- **Strengthen Fiscal Stability: Enhance [state tax collection efficiency](#)** by expanding GST coverage and digitizing tax administration.
 - **Rationalize subsidies** to balance welfare with fiscal discipline. **Encourage states to adopt fiscal responsibility** frameworks and limit unsustainable borrowing.
- **Address Unemployment: Deregulation is essential for MSME growth, fostering innovation and job creation by reducing compliance burdens.**
 - **Integrate AI and [digital skills](#) in vocational training** to prepare the workforce for future jobs.
- **Energy Transition: Accelerate green hydrogen, solar, and wind projects** to reduce coal dependence. **Invest in energy storage solutions** to improve grid stability for renewables.
 - **Enhance climate resilience** by expanding crop insurance, water conservation, and sustainable agriculture practices.

Conclusion

While India's economic fundamentals remain strong, challenges from global uncertainties, inflation, investment hesitancy, job creation, and climate change require policy interventions, fiscal discipline, and structural reforms to sustain high growth and global competitiveness.

Read more: [Union Budget 2025-26](#)

Drishti Mains Question:

Q. Assess India's economic growth prospects, highlighting the key challenges, and suggest policy measures to promote sustainable growth.

UPSC Civil Services Examination, Previous Year Question (PYQ)

Prelims:

Q. Along with the Budget, the Finance Minister also places other documents before the Parliament which include 'The Macro Economic Framework Statement'. The aforesaid document is presented because this is mandated by (2020)

- (a) Long standing parliamentary convention
- (b) Article 112 and Article 110(1) of the Constitution of India
- (c) Article 113 of the Constitution of India
- (d) Provisions of the Fiscal Responsibility and Budget Management Act, 2003

Ans: (d)

Mains:

Q. Distinguish between Capital Budget and Revenue Budget. Explain the components of both these Budgets. (2021)

Q. “Industrial growth rate has lagged behind in the overall growth of Gross-Domestic-Product(GDP) in the post-reform period” Give reasons. How far are the recent changes in Industrial Policy capable of increasing the industrial growth rate? **(2017)**

Q. Do you agree that the Indian economy has recently experienced a V- shapes recovery? Give reasons in support of your answer. **(2021)**

PDF Refernece URL: <https://www.drishtiiias.com/printpdf/economic-survey-2024-25-1>

