



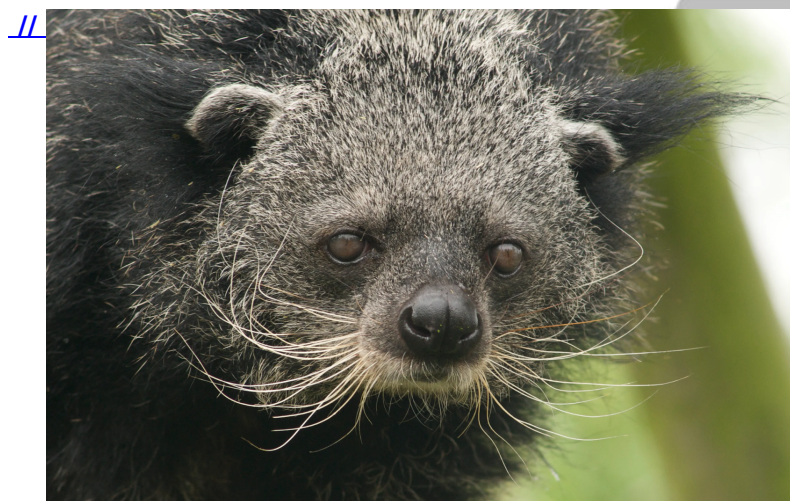
# Binturong

## Why in News?

The police and forest officials in **Manipur's Ukhrul town have been scanning “gambling dens”** following reports of **wild animals (dead or alive) such as Binturong being** offered as prizes for raffle draws (a lottery in which the prizes are goods rather than money).

- Different types of birds such as the grey-sided thrush and tragopans (often called horned pheasants) have also been spotted.
- Blyth's tragopan is the **State bird of Nagaland**.

## What are the Key Facts about Binturong?



### ▪ About:

- Binturong, (*Arctictis binturong*), also called bear cat or cat bear, catlike omnivore of the civet family (*Viverridae*), found in dense forests of Southeast Asia.
- It has long shaggy hair, tufted ears, and a long, bushy, prehensile tail. The colour generally is black with a sprinkling of whitish hairs.
- The binturong is **principally nocturnal and crepuscular** (that is, active during twilight).
- It is found most often among the trees, using its prehensile tail as an aid in climbing. It feeds mainly on fruit, such as figs, but it also takes eggs and small animals.
- In some areas binturongs are tamed and have been reported as being affectionate pets.

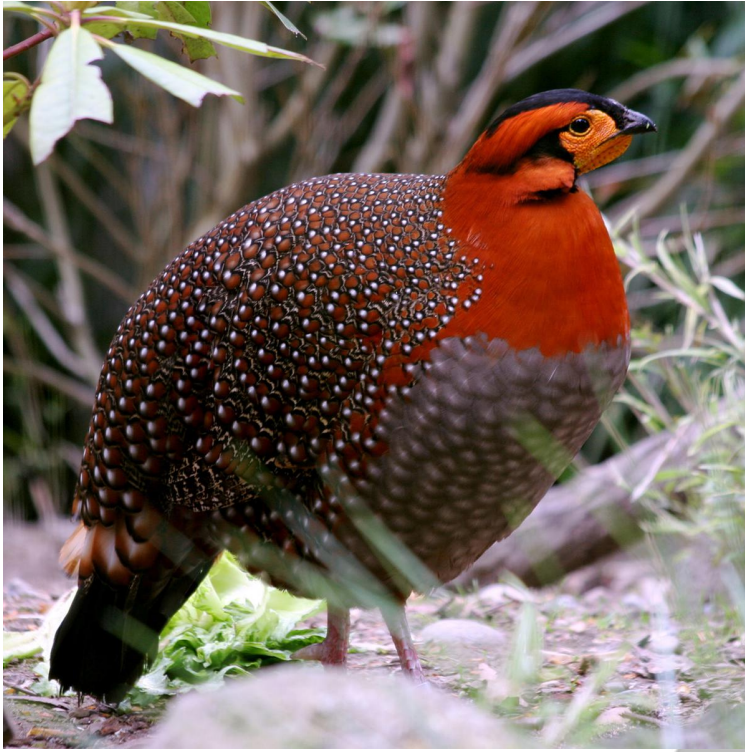
### ▪ Distribution:

- Its **range extends from Nepal, India, and Bhutan southward to the Indonesian islands of Sumatra and Java** and eastward to Borneo.

### ▪ Conservation:

- **IUCN Red List:** Vulnerable
- **CITES listing:** Appendix III
- **Indian Wildlife Protection Act, 1972:** Schedule I

## What are the Key Facts about Blyth's Tragopan?



- **Distribution:**
  - Bhutan, China, India, Myanma.
- **Conservation:**
  - [IUCN Red List](#): Vulnerable
  - [CITES listing](#): Appendix I
  - [Indian Wildlife Protection Act, 1972](#): Schedule I

[Source: TH](#)

PDF Refernece URL: <https://www.drishtias.com/printpdf/binturong>

दृष्टि  
The Vision