

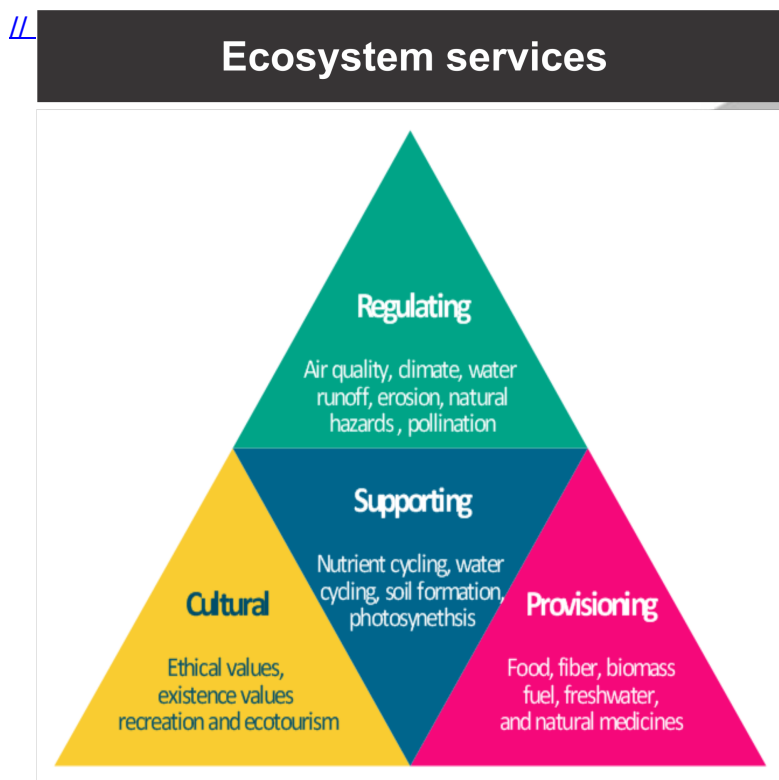


## Guindy National Park: Tamil Nadu

### Why in News

The **Guindy National Park** provides a number of [ecosystem services](#) to the people of **Chennai, Tamil Nadu**.

- Ecosystem services are the **direct and indirect contributions of ecosystems to human well-being**.



### Key Points

- **About:**
  - It is India's **eighth-smallest national park** and one of the very few national parks located inside a city. It is located in the heart of **Chennai's metropolitan area**.
  - It is one of the last remnants of the **tropical dry evergreen forests of the Coromandel Coast**.
  - About 22 acres of the Guindy National Park has been carved out into a park known as the **Children's Park for ex-situ conservation**.
  - **Guindy Snake Park is next to Guindy National Park**. It gained statutory recognition as a medium zoo from the [Central Zoo Authority \(CZA\)](#) in **1995**.
  - In **1978** the small area, popularly known as **Guindy Deer Park**, was **declared as a**

**national park.**

▪ **Flora and Fauna:**

- It contains more than 30 species of trees and a number of century old gigantic **Banyan Trees**.
- It has a **significant population of black bucks, spotted deers, jackals, varieties of snakes**, over 100 species of birds and over 60 species of butterflies.

▪ **Other National Parks in Tamil Nadu:**

- Gulf of Mannar Marine National Park (21 Islands), Dhanushkodi.
- Indira Gandhi National Park **previously Known as Anamalai Wildlife Sanctuary**, Tiruppur.
- **Mukurthi National Park**, Ooty.
- Mudumalai National Park, Madumalai.

**Ex-situ and In-situ Conservation Methods**

- **Ex situ conservation** is the conservation and **maintenance of samples of living organisms outside their natural habitat**.
  - Maintenance of **Gene Banks, Seed Banks etc.** comes under this method of conservation.
- **In situ conservation is conservation of species in their natural habitats**.
  - Maintenance of natural habitats in the form of **wildlife sanctuaries, national parks etc.** comes under this method of conservation.

**Source: DTE**

PDF Refernece URL: <https://www.drishtiiias.com/printpdf/guindy-national-park-tamil-nadu>

