



Dinosaur Highway

[Source: TH](#)

Recently, hundreds of **dinosaur footprints**, dating back to the **Middle Jurassic Period** (around 166 million years ago), were discovered at **Dewars Farm Quarry in Oxfordshire, UK**, earning the site the nickname "**dinosaur highway**" due to the large number of footprints found.



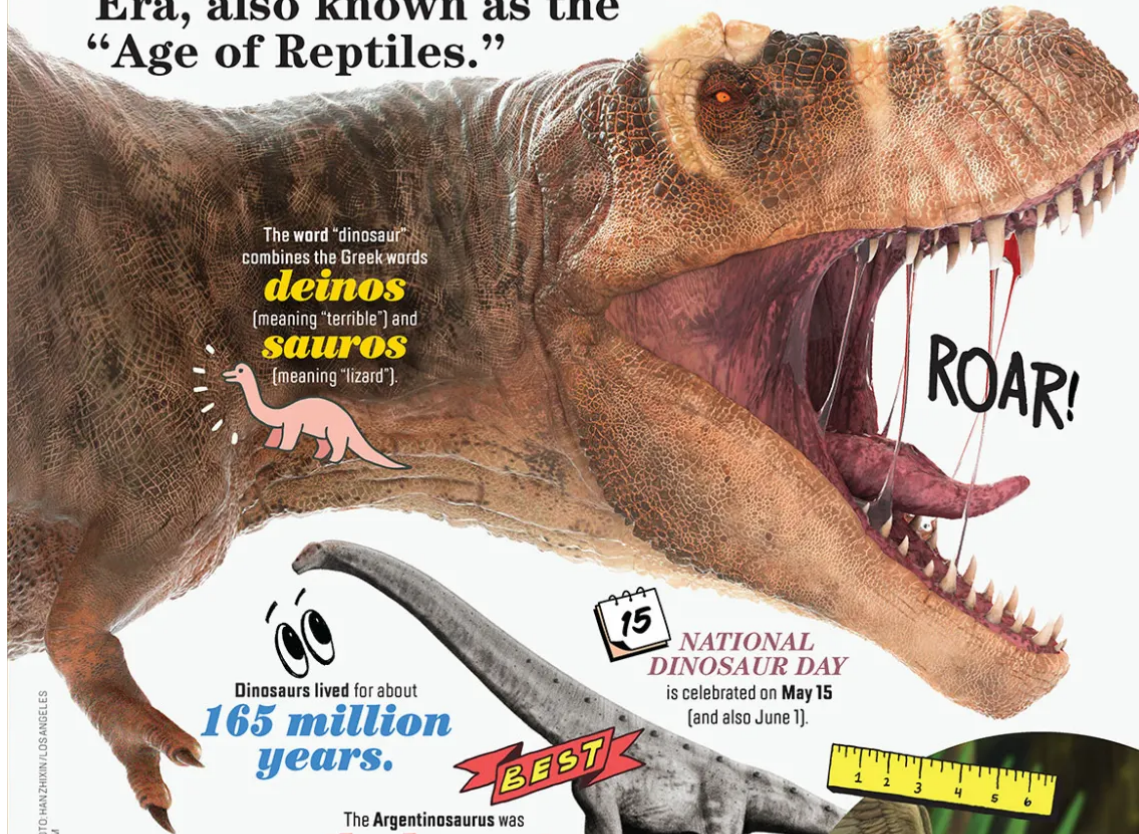
- The footprints include **Sauropods**, large herbivores like **Cetiosaurus** (up to 60 ft), and **Megalosaurus**, a **30-ft carnivore** with triple-claw prints.

DINOSAURS

Dinosaurs were reptiles that roamed Earth during the Mesozoic Era, also known as the "Age of Reptiles."



THE TYRANNOSAURUS REX (T. rex) is the most famous dinosaur.



The word "dinosaur" combines the Greek words **deinos** (meaning "terrible") and **sauros** (meaning "lizard").



Dinosaurs lived for about **165 million years.**



NATIONAL DINOSAUR DAY is celebrated on **May 15** (and also June 1).



The **Argentinosaurus** was the **largest dinosaur.**

It was more than 100 feet long and about 50 feet tall.



The first dinosaur to be named was the **MEGALOSAURUS** in 1824.



Most dinosaurs were **herbivores** (vegetarians).



The dinosaur with the longest name is the **MICROPACHYCEPHALOSAURUS.**

The **smallest dinosaur**

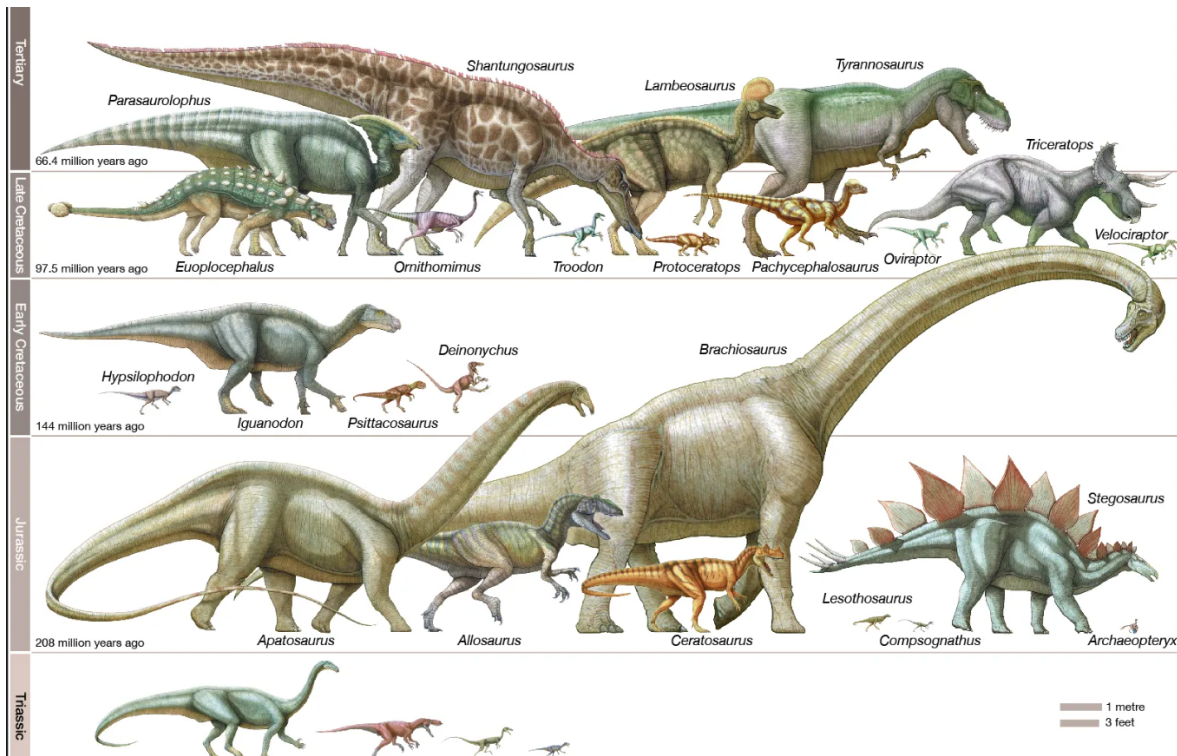
was the **Oculudentavis**. It was the size of a bee hummingbird, today's smallest bird, which measures about 2½ inches long.



- **Dinosaurs:** Dinosaurs were prehistoric reptiles that lived from about **245 million years ago** to **66 million years ago** during the **Mesozoic Era** (Triassic, Jurassic, Cretaceous periods).
 - Modern birds are descendants of non-avian dinosaurs.
- **Classification:**
 - **Ornithischia:** Beaked plant-eaters (e.g., Stegosaurus, Triceratops).
 - **Sauropodomorpha:** Long-necked herbivores (e.g., Diplodocus).
 - **Theropoda:** Carnivores (e.g., T. rex, Velociraptor), ancestors of birds.
- **Size:** Dinosaurs ranged from massive species like **Argentinosaurus (110 tons)** to small ones like the **bee hummingbird**.
- **Diet and Movement:**
 - **Meat-eaters:** Two-legged, hunted alone or in groups.

◦ **Plant-eaters:** Two or four-legged, grazed on plants.

- **Distinctive Feature:** The key feature distinguishing dinosaurs from other reptiles is the **hole in the hip socket, allowing upright walking.**
- **Extinction:** Dinosaurs went extinct around, likely due to an **asteroid impact** in the **Cretaceous period**, creating a crater in the **Yucatan Peninsula (Mexico).**



Read More: [Connection Between Dinosaurs and Birds](#)

PDF Reference URL: <https://www.drishtias.com/printpdf/dinosaur-highway>