



S.A.R.A.H

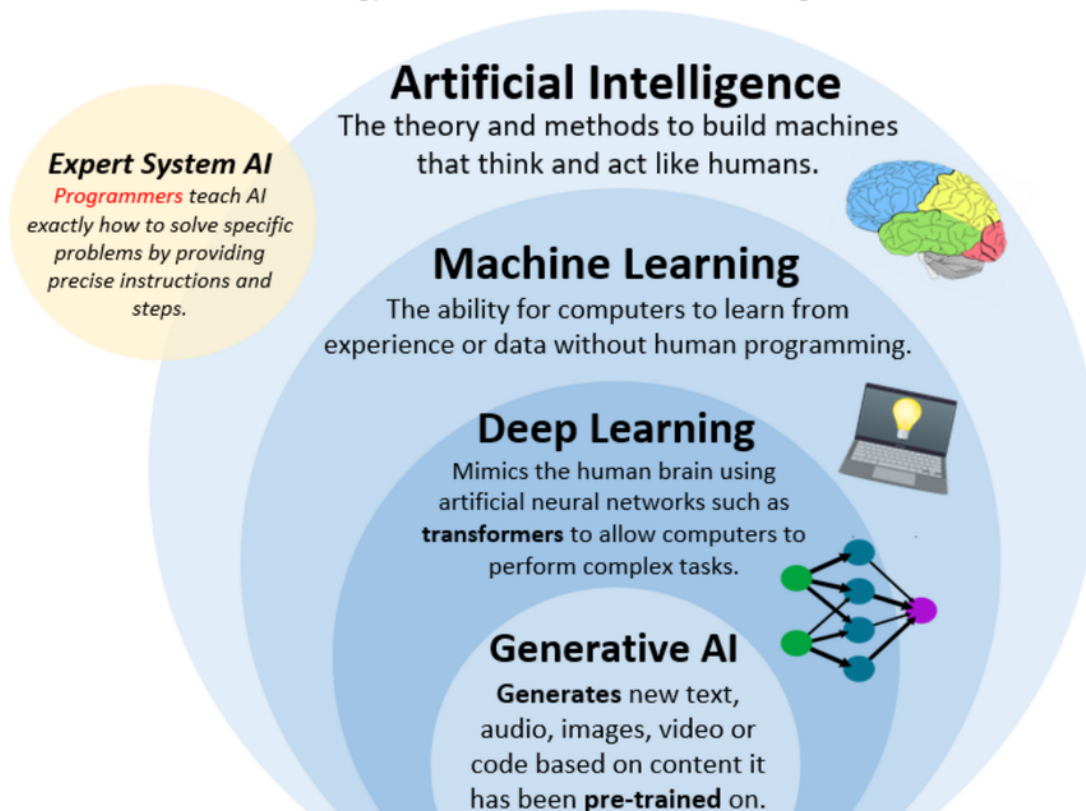
[Source: WHO](#)

Recently, the [World Health Organization \(WHO\)](#) announced the launch of S.A.R.A.H., a **digital health promoter prototype** with **enhanced empathetic response** powered by **generative artificial intelligence (AI)**.

- **S.A.R.A.H. (Smart AI Resource Assistant for Health)** engages users in **8 languages** on various health topics, **accessible 24/7** on any device.
- It **provides information on major health topics**, including healthy habits, mental health, and other risk factors related to overall physiological health.
- It aims to **empower individuals to optimise their health** and well-being journey, serving as an additional tool to realise their **rights to health**.
- It supports users in **understanding risk factors** for diseases like cancer, heart disease, lung disease, and diabetes.

Defining Generative AI

To understand generative artificial intelligence (GenAI), we first need to understand how the technology builds from each of the AI subcategories listed below.



Read More: [Artificial Intelligence \(AI\)](#)

PDF Refernece URL: <https://www.drishtias.com/printpdf/sarah>

