



Cyclone Remal

Why in News?

The deep depression brewing in the [Bay of Bengal](#) has escalated into [Cyclone "Remal."](#) **posing a potential threat** to West Bengal and neighboring states, including Jharkhand.

Key Points

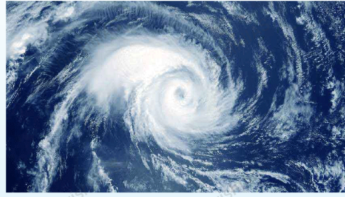
- **Meteorologists** from the Ranchi-based [India Meteorological Department \(IMD\)](#) anticipate significant effects in the affected regions.
 - The IMD predicts **thunderstorms, lightning, and strong winds** across several parts of the state from 26th May to 31st May 2024.
 - These weather conditions are expected to affect various districts, including Jamshedpur, Ranchi, Bokaro, Gumla, Hazaribagh, Simdega, and more.
- The name '**Remal**' in the list of tropical cyclones is given by **Oman**. It will be the first cyclone to hit the region this 2024 pre-monsoon season.
 - 'Remal,' meaning '**sand**' in Arabic.

//



CYCLONE

Cyclones are rapid **inward** air circulation around a **low-pressure** area.

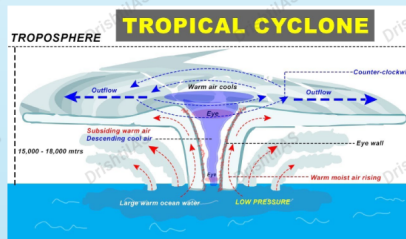


Cyclone v/s Anticyclone

Pressure System	Pressure Condition at the Center	Pattern of Wind Direction	
		Northern Hemisphere	Southern Hemisphere
Cyclone	Low	Anticlockwise	Clockwise
Anticyclone	High	Clockwise	Anticlockwise

Classification

- **Tropical Cyclones;** originate between the **Tropics of Capricorn and Cancer**
- **Extra Tropical/ Temperate Cyclones;** originate in the **Polar Regions**



Conditions for Formation

- Large sea surface with temperature $>27^{\circ}\text{C}$.
- Presence of the **Coriolis force**
- Small **variations in the vertical wind speed**
- **A pre-existing weak low- pressure area**
- **Upper divergence** above the sea level system

Different Names for Tropical Cyclones

- **Typhoons** - Southeast Asia and China
- **Hurricanes** - North Atlantic and eastern Pacific
- **Tornados** - West Africa and southern USA
- **Willy-willies** - Northwest Australia
- **Tropical Cyclones** - Southwest Pacific and Indian Ocean

Nomenclature

- Nodal Authority - **World Meteorological Organization (WMO)**
- Indian Ocean Region - **Bangladesh, India, Maldives, Myanmar, Oman, Pakistan, Sri Lanka and Thailand** contribute to naming cyclones that occur in this region.

Cyclones in India

- **Bi-annual Cyclone Season** - March to May and October to December
- Recent Cyclones - **Tauktae, Vayu, Nisarga and Mekanu** (in Arabian Sea) and **Asani, Amphan, Fani, Nivar, Bulbul, Titli, Yaas and Sitrang** (in Bay of Bengal)