



## PM-JANMAN Housing for PVTGs

**For Prelims:** [Particularly Vulnerable Tribal Groups](#), [PM-JANMAN Scheme](#), [Janjatiya Gaurav Divas](#), [Viksit Bharat Sankalp Yatra](#), [PM PVTG Mission](#), [PM Gati Shakti portal](#)

**For Mains:** Sustainable Livelihoods For PVTGs. Welfare schemes for vulnerable sections of the population, Government Policies & Interventions

[Source: TH](#)

### Why in News?

The housing component of [Pradhan Mantri Janjati Adivasi Nyay Maha Abhiyaan \(PM-JANMAN\)](#), aimed at providing housing for [Particularly Vulnerable Tribal Groups \(PVTGs\)](#), faces significant challenges hindering its smooth implementation.

### What are the Challenges Hindering the implementation of PM-JANMAN?

- **Data Discrepancies:**
  - Discrepancies have emerged between the **data provided by the Centre and the figures identified by the states**. This disparity in data poses a significant hurdle in accurately identifying potential beneficiaries.
  - The Centre relied on the [PM Gati Shakti portal](#) for estimating the total **population of 75 PVTG**, resulting in varying figures.
    - The estimates jumped from **28 lakh to 44.64 lakhs** within a short span, indicating inconsistencies in data collection.
  - State governments were given a **limited timeframe** to conduct their surveys, leading to **rushed and incomplete data collection processes**.
    - States like Kerala, Madhya Pradesh, and Tripura have raised **concerns about beneficiaries being left out due to discrepancies in the data**.
      - For example, Madhya Pradesh has found 50,000 additional **eligible households outside the villages notified by the Centre**.
- **Slow Progress:**
  - The simultaneous collection of beneficiary data and project implementation has led to **delays in the housing component of PM-JANMAN**. Out of the targeted 5 lakh houses, only 1.59 lakh have been sanctioned, significantly missing the initial target.
- **Election Year Pressure:**
  - The scheme is being implemented at a rapid pace, especially with the upcoming General Elections 2024. The urgency to **show progress may compromise thorough planning and execution**, potentially affecting the quality and inclusivity of the housing distribution.
- **Geographical Challenges:**
  - Identifying eligible beneficiaries in **remote and inaccessible areas** poses logistical challenges. Lack of **infrastructure and communication networks** in tribal regions may impede data collection efforts and delay the implementation of the housing scheme.
- **Dynamic Population Dynamics:**

- Tribal populations, especially PVTGs, often **exhibit migratory patterns** in search of **employment and livelihood opportunities**.
  - This dynamic nature of population movement complicates the task of accurately estimating and identifying eligible beneficiaries, requiring adaptive strategies to ensure comprehensive coverage.

## What is PM-JANMAN?

### ▪ About:

- PM-JANMAN, launched on 15<sup>th</sup> November 2023, on [Janjatiya Gaurav Diwas](#), focuses on **11 critical interventions through 9 ministries** to improve the socio-economic welfare of PVTGs.
- PM-JANMAN comprises **Central Sector and Centrally Sponsored Schemes** to improve the socio-economic conditions of PVTGs.
- The scheme has a **total outlay of Rs 24,104 crore** to be spent over a three-year period, of which nearly **80% is only for the construction of houses and roads**.
  - An allocation of Rs 15,000 crore has been made for the next three years under the **Development Action Plan for the Scheduled Tribes (DAPST)** to implement the housing component of PM-JANMAN.

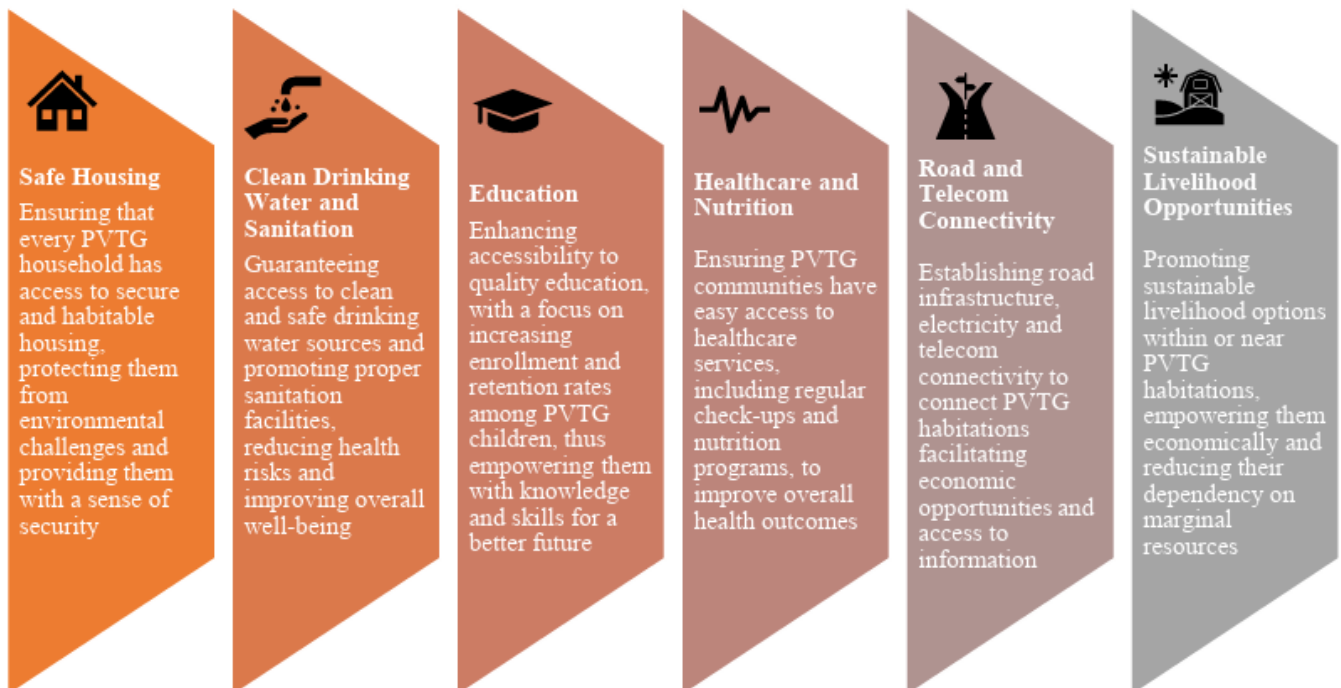
### ▪ Vision:

- PM-JANMAN envisions improving the socio-economic status of PVTGs by bridging gaps in health, education, and livelihoods.
  - The focus is on enhancing basic infrastructure in PVTG communities, habitations, and families, aligning with existing schemes of nine Ministries/Departments.

### ▪ Scope:

- The mission's primary scope is to comprehensively enhance the living conditions of PVTG by ensuring they have access to essential amenities and services. This includes:

//



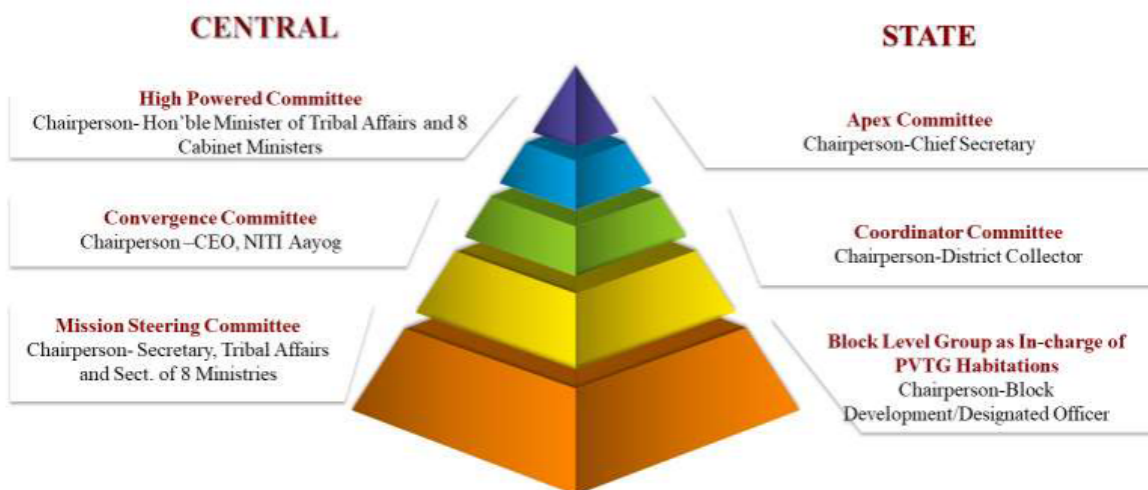
### ▪ Foundational Features of PM-JANMAN:

#### ◦ Inter-Ministerial Convergence:

- In a unique approach, **9 Ministries** of the Government of India collaborate under the leadership of the **Ministry of Tribal Affairs**.
  - Each Ministry oversees the implementation of its schemes while collectively ensuring comprehensive coverage and welfare of the most vulnerable tribal communities.

- **Alignment of Schemes/Programs:**
  - Existing norms of schemes within concerned Ministries are modified to address the **specific needs of tribal communities.**
    - Revised guidelines are issued to ensure that the objectives of PM-JANMAN are effectively integrated into ongoing programs.
- **Coverage of the Scheme:**
  - PM-JANMAN aims to reach **75 PVTGs residing in 18 states and 1 UT** who continue to lag in socio-economic indicators of educational, health and livelihood.
    - The focus is on providing holistic support to tribal communities across various domains, including health, education, and livelihoods.
- **Identification of Gaps:**
  - Through physical surveys conducted by state governments, gaps in each intervention area are identified.
    - Data is updated on the **PM Gati-shakti Portal**, enabling cross-verification by relevant Ministries and State Departments to ensure accuracy and completeness.
- **Provision of Funds:**
  - The source of funds for each of the 11 interventions is the **DAPST grants** allocated to respective Ministries/Departments under their identified schemes covered by PM-JANMAN.
    - Flexibility is provided under the DAPST mechanism to ensure dedicated funds availability for the successful implementation of the mission.
- **Reward Mechanism:**
  - Performance evaluation is conducted through the **ranking of districts based on monthly incremental changes** in performance indicators.
  - The purpose is to foster a sense of competition among district teams, with the top three districts and Ministries recognised and rewarded for their outstanding performance.

## IMPLEMENTATION STRUCTURE



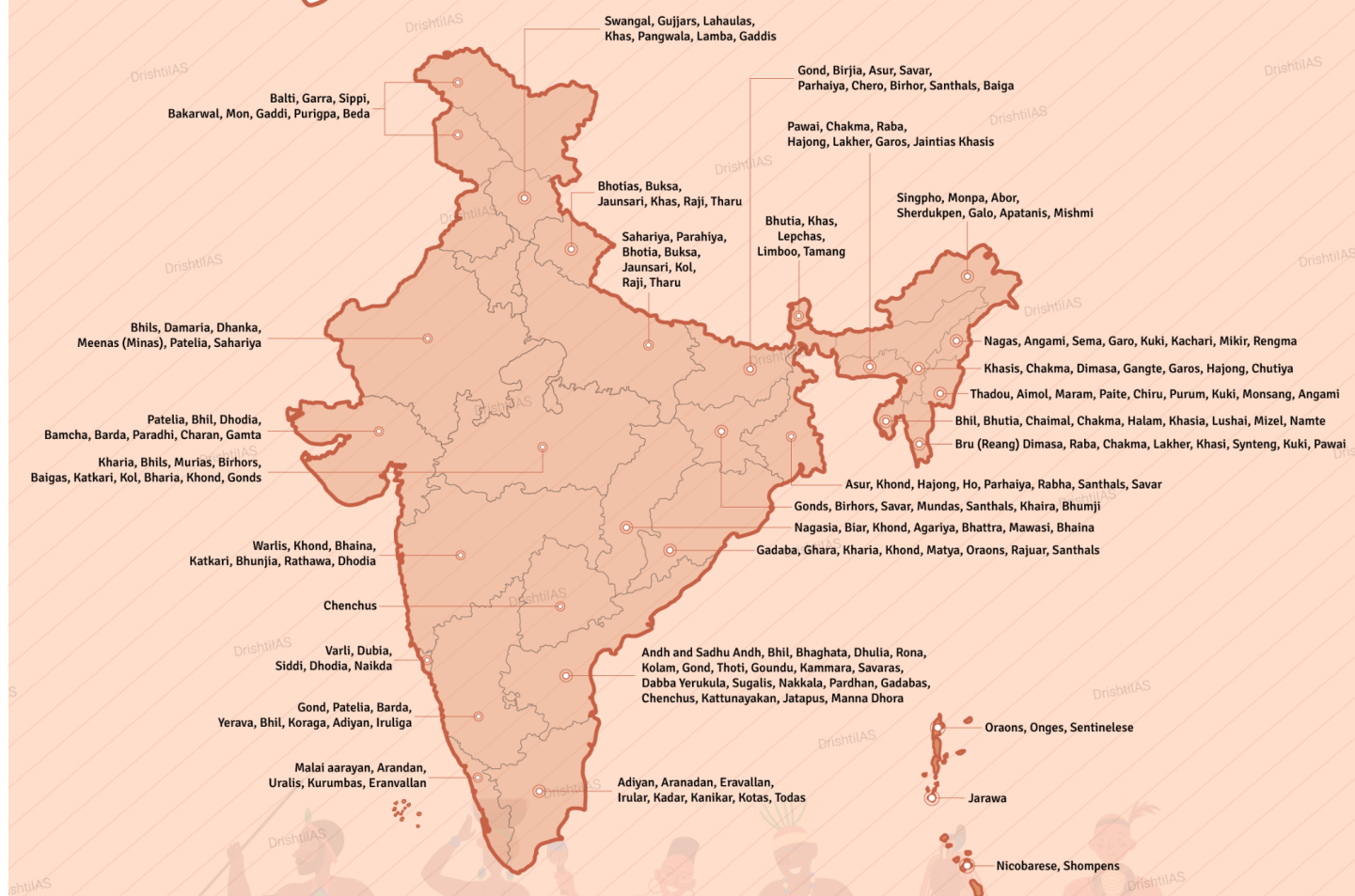
### Note

- The DAPST is a strategy for tribal development in India. The Ministry of Tribal Affairs and **41 other ministries and departments** allocate funds to tribal development projects under DAPST.
  - These projects include education, health, agriculture, irrigation, roads, housing, electrification, and employment.

## What are the other Initiatives for PVTGs?

- [Janjatiya Gaurav Divas.](#)
- [Viksit Bharat Sankalp Yatra.](#)
- [PM PVTG Mission.](#)

# Major Tribes in India



- STs constitute **8.6% of the population of India** (Census 2011). Draft National Tribal Policy, 2006 records **698 STs** in India.
- **Particularly Vulnerable Tribal Groups (PVTGs)** are more vulnerable among the tribal groups. Among the 75 listed PVTGs, the highest number is found in Odisha.
- **Bhil is the largest tribal group** (38% of the total scheduled tribal population of India) followed by the Gonds.
- **Madhya Pradesh has the highest tribal population** in India (Census 2011).
- The **Santhal** are the oldest tribes in India. The Santhal system of governance, known as **Manjhi-Paragana**, can be compared to local self-governance.
- According to the Scheduled Castes and Scheduled Tribes list (modification orders), 1956, the inhabitants of **Lakshadweep** who and both of whose parents were born in these islands are treated as STs.
- **Article 342** of the Constitution prescribes procedure to be followed for specification of STs.
- **Article 275** provides for the **grant of special funds** by the Union Government to the State Government for promoting the welfare of Scheduled Tribes and providing them with a better administration.

## Way Forward

- Implement a standardised **data collection methodology to ensure data accuracy.**
  - Implement streamlined processes to expedite data collection and project execution without compromising quality.
- **Engage tribal communities** in the scheme's planning and execution to enhance inclusivity and effectiveness.

- Invest in **infrastructure and communication networks** in tribal regions to facilitate data collection and scheme implementation.
  - Develop adaptive strategies to **account for dynamic population movements** among tribal groups and ensure comprehensive coverage of eligible beneficiaries.
- Provide training and capacity-building programs for stakeholders involved in data collection and scheme implementation to enhance efficiency and effectiveness.\

## UPSC Civil Services Examination, Previous Year Question (PYQ)

### Prelims

**Q.1 Consider the following statements about Particularly Vulnerable Tribal Groups (PVTGs) in India: (2019)**

1. PVTGs reside in 18 States and one Union Territory.
2. A stagnant or declining population is one of the criteria for determining PVTG status.
3. There are 95 PVTGs officially notified in the country so far.
4. Irular and Konda Reddi tribes are included in the list of PVTGs.

**Which of the statements given above are correct?**

- (a) 1, 2 and 3  
 (b) 2, 3 and 4  
 (c) 1, 2 and 4  
 (d) 1, 3 and 4

**Ans: C**

**Q.2 Consider the following pairs: (2013)**

	Tribe	State
1.	Limboo (Limbu)	Sikkim
2.	Karbi	Himachal Pradesh
3.	Dongaria Kondh	Odisha
4.	Bonda	Tamil Nadu

**Which of the above pairs are correctly matched?**

- (a) 1 and 3 only  
 (b) 2 and 4 only  
 (c) 1, 3 and 4 only  
 (d) 1, 2, 3 and 4

**Ans: (a)**

### Mains:

**Q.** What are the two major legal initiatives by the State since Independence addressing discrimination against Scheduled Tribes (STs)? **(2017)**

**Q.** Why are the tribals in India referred to as 'the Scheduled Tribes'? Indicate the major provisions enshrined in the Constitution of India for their upliftment. **(2016)**

