



Silicosis Tragedy in Panna Mining Community | Madhya Pradesh | 09 Oct 2024

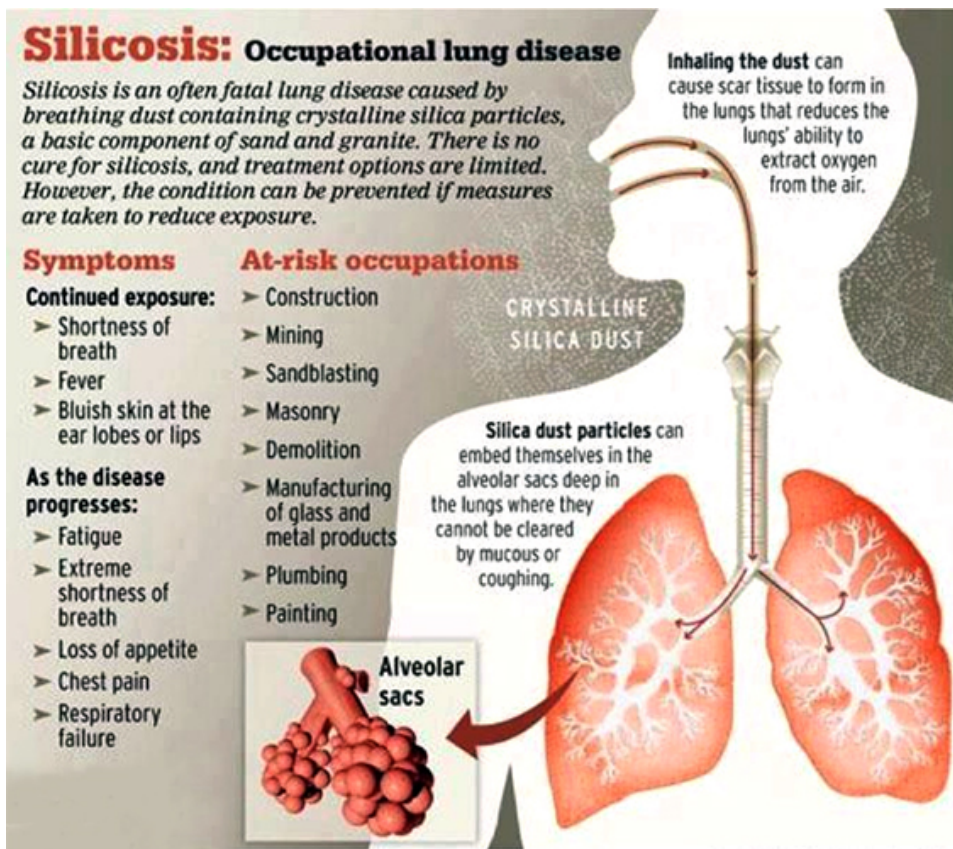
Why in News?

The devastating impact of mining continues to claim lives in Panna, with families grappling with silicosis misdiagnosed as [tuberculosis](#).

Key Points

- **Silicosis:**
 - A fatal lung disease caused by inhaling fine silica dust, common in mining industries.
 - Symptoms include chronic cough, shortness of breath, and fatigue, often mistaken as tuberculosis.
 - Since 2014, five family members have died, suspected from silicosis.
- **Tuberculosis (TB):**
 - TB is caused by a bacterium called [Mycobacterium tuberculosis](#), belonging to the Mycobacteriaceae family consisting of about 200 members.
 - Some of Mycobacteria cause diseases like TB and [Leprosy](#) in humans and others infect a wide range of animals.
 - In humans, TB most commonly affects the lungs (pulmonary TB), but it can also affect other **organs (extra-pulmonary TB)**.
 - TB is a very ancient disease and has been documented to have existed in **Egypt as early as 3000 BC**. It is a treatable and curable disease.

//



Best Tourism Villages Award | Madhya Pradesh | 09 Oct 2024

Why in News?

Recently, three villages in Madhya Pradesh were recognized for their sustainable tourism efforts on [International Tourism Day \(27th September\)](#).

Key Points

▪ Awarded Villages:

◦ Pranpur:

- **Category:** Craft
- Notable for its weaving tradition with 243 households involved in handloom production.
- Artisans craft items from bamboo, wood, stone, jewelry, and clay.
- Infrastructure improvements include locally sourced stones for visitor access.
- Features a "**Handloom Cafe**" and an amphitheater for cultural performances.

◦ Sabarvani:

- Category: Responsible Tourism
- Transformed into a tourism hub since 2019, hosting over 300 international tourists.
- Offers cultural experiences like traditional cuisine and participation in local agricultural practices.
- Attractions include Anhoni Hot Spring, Ghoghra Waterfall, and proximity to [Satpura National Park](#).

- Activities for tourists include bullock cart rides, cow milking, and trekking on Monakhedi Hill.
- **Ladpura Khas:**
 - Category: Responsible Tourism.
 - Known for its community engagement and promotion of local traditions.
- **Best Tourism Villages Competition 2024:**
 - It was launched by the **Ministry of Tourism, Government of India**, to promote sustainable practices.
 - It aimed to identify villages preserving cultural and natural heritage.
 - A total of 36 villages recognized across eight categories.

International Tourism Day

- **History:** World Tourism Day was first celebrated in 1980 by the [United Nations World Tourism Organization \(UNWTO\)](#), and raises awareness about the social, cultural, and economic importance of tourism.
 - The day marks the adoption of UNWTO's statutes in 1975, signifying its official establishment five years later.
 - UNWTO advocates for tourism as a driver of economic growth, inclusive development, and environmental sustainability while supporting the sector in advancing knowledge and policies worldwide.
 - UNWTO comprises **160 Member States (including India)**, 6 Associate Members, 2 Observers, and over 500 Affiliate Members.
 - Headquartered in Madrid, Spain.

PDF Reference URL: <https://www.drishtiias.com/statepcs/10-10-2024/madhya-pradesh/print>

