



## More Frequent Cyclones in Eastern Arabian Sea

**For Prelims:** [Tropical Cyclones \(TC\)](#), [Arabian Sea](#), [Indian Ocean Dipole \(IOD\)](#), [El Nino](#).

**For Mains:** More Frequent Cyclones in the Eastern Arabian Sea, Environmental pollution and degradation, Salient features of the world's physical geography, Important Geophysical phenomena such as earthquakes, Cyclones etc, Changes in critical geographical features and in flora and fauna and the effects of such changes.

**Source:** [IE](#)

### Why in News?

Recently, a study has been published in the Nature Journal, which highlights the concerns related to [Climate Change](#) causing frequent [Tropical Cyclones \(TC\)](#) in the [Eastern Arabian Sea](#).

- The study is part of the "**Forecasting with Fisher's**" project, by the **Advanced Centre for Atmospheric Radar Research (ACARR)** at Cochin University of Science and Technology (CUSAT).

### What are the Key Findings of the Study?

- **Increasing Frequency and Severity of Cyclones:**
  - Changes in ocean and atmosphere **warming patterns are leading to more frequent and severe tropical** cyclones in the Eastern Arabian Sea, adjacent to India's west coast.
    - Typically, tropical cyclones in the Arabian Sea occur **at the start of the southwestern monsoon between March and June**, as well as after the season, between October and December.
  - The Arabian Sea accounts for about 2% of the annual global mean of tropical cyclones but **poses a considerable threat due to its densely populated coastlines**.
- **Impact of Indian Ocean Dipole (IOD):**
  - The positive phase of [IOD](#), where one part of the ocean gets warmer than the other, leads to **warmer sea surface temperatures** and increased precipitation in the western Indian Ocean region.
    - **IOD, sometimes referred to as the Indian Nino**, is similar to the [El Nino](#) phenomenon, occurring in the relatively smaller area of the [Indian Ocean](#) between the Indonesian and Malaysian coastline in the east and the African coastline near Somalia in the west.
- **Anthropogenic Influence:**
  - The recent increase in the frequency of extremely severe cyclonic storms over the Arabian Sea during the post-monsoon season is **attributed to anthropogenic (human-caused) influence** rather than natural variability.
  - Human-induced climate change is contributing to the **intensification and higher frequency of cyclones** in the Arabian Sea.
- **Impact on Western Indian Coastline:**

- The intensification and increase in cyclone frequency pose a significant threat to the **densely populated coastal regions** along the western coast of **India, from Gujarat to Thiruvananthapuram**, facing higher risks, including strong winds, storm surges, heavy rainfall, and other associated hazards.
- **Concerns for Coastal Communities:**
  - The changing cyclone patterns are expected to **significantly affect** the lives and livelihoods of **indigenous coastal communities** and artisanal fishers, necessitating a need for further studies and adaptation strategies.
- **Recommendations:**
  - The study calls for **changes in development strategies** to account for increased cyclone risks and emphasizes the need for updated policies and technologies related to storm warnings and localized weather services.

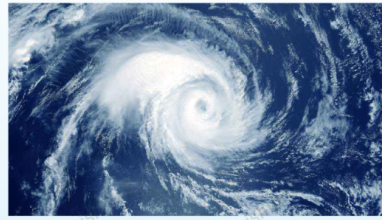
## What are Cyclones?

//



# CYCLONE

Cyclones are rapid **inward** air circulation around a **low-pressure** area.

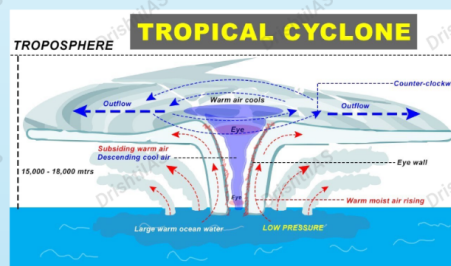


## Cyclone v/s Anticyclone

Pressure System	Pressure Condition at the Center	Pattern of Wind Direction	
		Northern Hemisphere	Southern Hemisphere
Cyclone	Low	Anticlockwise	Clockwise
Anticyclone	High	Clockwise	Anticlockwise

## Classification

- **Tropical Cyclones;** originate between the **Tropics of Capricorn and Cancer**
- **Extra Tropical/ Temperate Cyclones;** originate in the **Polar Regions**



### Conditions for Formation

- Large sea surface with temperature  $>27^{\circ}\text{C}$ .
- Presence of the **Coriolis force**
- Small **variations in the vertical wind speed**
- **A pre-existing weak low- pressure area**
- **Upper divergence** above the sea level system

### Different Names for Tropical Cyclones

- **Typhoons** - Southeast Asia and China
- **Hurricanes** - North Atlantic and eastern Pacific
- **Tornados** - West Africa and southern USA
- **Willy-willies** - Northwest Australia
- **Tropical Cyclones** - Southwest Pacific and Indian Ocean

### Nomenclature

- Nodal Authority - **World Meteorological Organization (WMO)**
- Indian Ocean Region - **Bangladesh, India, Maldives, Myanmar, Oman, Pakistan, Sri Lanka and Thailand** contribute to naming cyclones that occur in this region.

### Cyclones in India

- **Bi-annual Cyclone Season** - March to May and October to December
- Recent Cyclones - **Tauktae, Vayu, Nisarga and Mekanu** (in Arabian Sea) and **Asani, Amphan, Fani, Nivar, Bulbul, Titli, Yaas and Sitrang** (in Bay of Bengal)

## Note

- Cyclones in the Bay of Bengal (BOB) are relatively **more frequent and intense than those of the Arabian Sea**.
  - The Bay of Bengal typically sees multiple cyclonic events during the tropical cyclone season, which is primarily from April to December.
- The BOB usually has **higher sea surface temperatures**, especially during the pre-monsoon and post-monsoon seasons, providing the **necessary energy and moisture for cyclone formation** and intensification.
- The convergence of winds in the BOB, combined with the **Coriolis Force** (resulting from the Earth's rotation), creates an **environment suitable for cyclone genesis**. These converging

winds **form areas of low pressure**, which can develop into tropical disturbances and cyclones.

## UPSC Civil Services Examination Previous Year Question (PYQ)

### **Prelims**

**Q. Consider the following statements: (2020)**

1. Jet streams occur in the Northern Hemisphere only.
2. Only some cyclones develop an eye.
3. The temperature inside the eye of a cyclone is nearly 10°C lesser than that of the surroundings.

**Which of the statements given above is/are correct?**

- (a) 1 only
- (b) 2 and 3 only
- (c) 2 only
- (d) 1 and 3 only

**Ans: (c)**

**Q. In the South Atlantic and South-Eastern Pacific regions in tropical latitudes, cyclone does not originate. What is the reason? (2015)**

- (a) Sea surface temperatures are low
- (b) Inter-Tropical Convergence Zone seldom occurs
- (c) Coriolis force is too weak
- (d) Absence of land in those regions

**Ans: (b)**

### **Mains:**

**Q. Tropical cyclones are largely confined to the South China Sea, Bay of Bengal and Gulf of Mexico. Why? (2014)**