



King Cobra in Tillari Reserve

Why in News

Recently, a **king cobra (*Ophiophagus hannah*)**, was sighted in the **recently declared [conservation reserve, Tillari](#)**, in Sindhudurg district, Maharashtra.

Key Points

- **King Cobra:**

- **About:**

- They are **one of the most venomous snakes on the planet and the longest of all venomous snakes.** //



- Their venom is not the most potent among venomous snakes, but **the amount of neurotoxin they can deliver in a single bite**—up to two-tenths of a fluid ounce—is **enough to kill 20 people, or even an elephant.**
- They are **the only snakes in the world that build nests** for their eggs, which they guard ferociously until the hatchlings emerge.

- **Habitat:**

- They live mainly in the **rain forests and plains of India, southern China, and Southeast Asia.**
- They are comfortable in a variety of habitats, including **forests, bamboo thickets, mangrove swamps, high-altitude grasslands, and in rivers.**

- **Threats:**

- They face a variety of **threats stemming from human activities such as:**

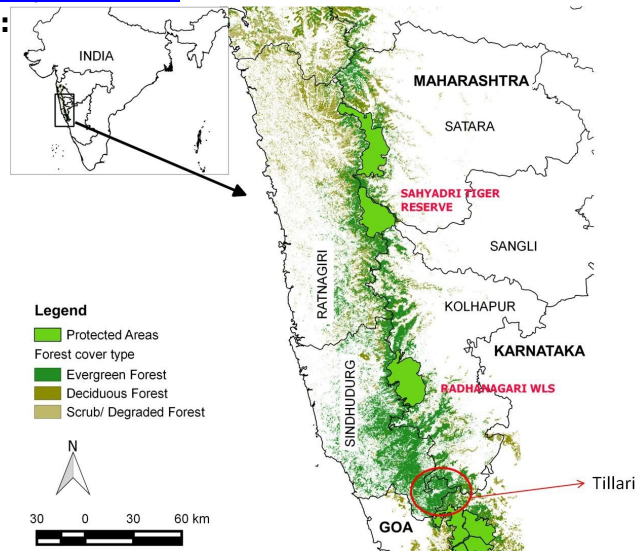
- **Deforestation.**

- **International pet trade.**
- **Persecution by humans.**
- Used for **skin, food, and medicinal purposes.**

- **Protection Status:**

- [IUCN Red List](#): **Vulnerable.**
- [CITES](#): **Appendix II.**
- [Wildlife \(Protection\) Act, 1972](#): **Schedule II.**

- **Tillari Conservation Reserve:**



- Tillari is the **seventh wildlife corridor in the state to be declared as a 'conservation reserve'**.
 - Tillari is a reserve in [western ghats](#).
- The area **covering nine villages in the forest range** is known to serve as a corridor and even as a **habitat for the population of tigers and elephants** moving between the three states of Goa, Karnataka and Maharashtra.
- It connects [Mhadei sanctuary in Goa](#) and Bhimgad in Karnataka.
- It has **semi-evergreen forest, tropical moist deciduous forests**, and a number of unique trees, butterflies, and flowers.

Conservation Reserves in India

- Conservation reserves and community reserves are terms denoting **protected areas of the country which typically act as buffer zones** to or **connectors and migration corridors** between established national parks, wildlife sanctuaries and reserved and protected forests.
- Such areas are designated as conservation areas if they are uninhabited and completely owned by the Government of India but **used for subsistence by communities and community areas if part of the lands are privately owned.**
- These protected area categories were first introduced in the **Wildlife (Protection) Amendment Act of 2002 – the amendment to the Wildlife Protection Act of 1972.**
- These categories were **added because of reduced protection in and around existing or proposed protected areas** due to private ownership of land and land use.
- There are **97 existing Conservation Reserves in India** covering an area of **44483 km², which is 0.14% of the geographical area of the country** (National Wildlife Database, Dec. 2020).

[Source: IE](#)

PDF Refernece URL: <https://www.drishtias.com/printpdf/king-cobra-in-tillari-reserve>

