



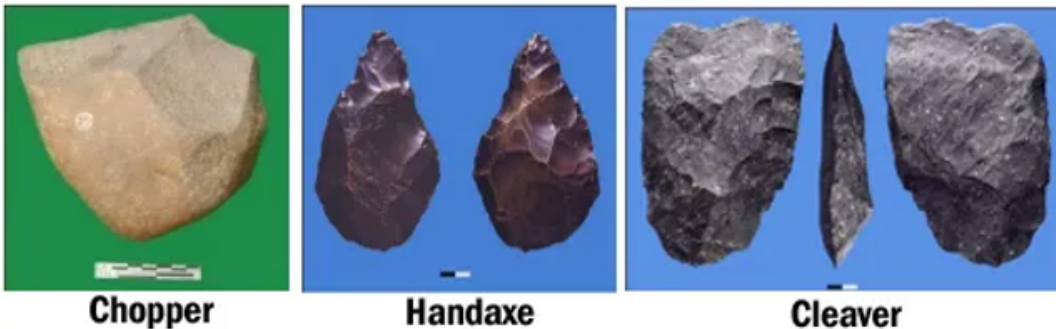
Floods in Telangana Reveal Paleolithic Tools

The recent **floods** in the **Mulugu district of Telangana** has led to a fresh discovery of **paleolithic quartzite tools**. The tools or hand axes were found in the **sand bed of a stream** that dried up after the flood.

- The hand axes were found in the stream between **Gurrevula and Bhupatipuram villages** in Mulugu district.
 - According to paleontologists, the **stone axe** belongs to the **Lower Paleolithic period** and is about 30 lakh years old.
- The **Paleolithic Age** dates back to approximately **33 lakh years BC**, spanning 10,000 years. Paleolithic hunter gatherers used heavy quartzite and large tools for woodcutting and hunting animals for sustenance.
- Also, in 1863, **East India Company's** Geological Survey team discovered a paleolithic site at **Attirampakkam near Madras** (present-day Chennai).
 - Since then, Paleolithic culture has been labeled as **Madras Hand-Axe Industry or Madrasian Culture**.

//

Tools of Paleolithic Era



Chopper

Handaxe

Cleaver