



## S.A.R.A.H

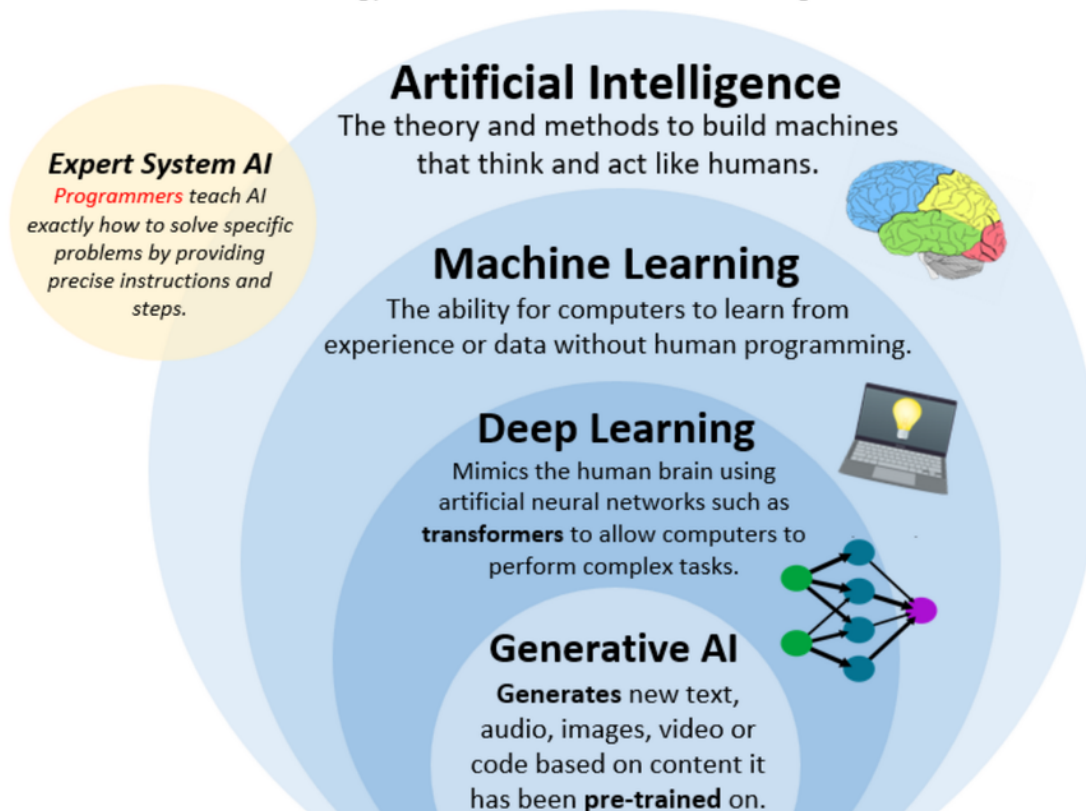
[Source: WHO](#)

Recently, the [World Health Organization \(WHO\)](#) announced the launch of S.A.R.A.H., a **digital health promoter prototype** with **enhanced empathetic response** powered by **generative artificial intelligence (AI)**.

- **S.A.R.A.H. (Smart AI Resource Assistant for Health)** engages users in **8 languages** on various health topics, **accessible 24/7** on any device.
- It **provides information on major health topics**, including healthy habits, mental health, and other risk factors related to overall physiological health.
- It aims to **empower individuals to optimise their health** and well-being journey, serving as an additional tool to realise their **rights to health**.
- It supports users in **understanding risk factors** for diseases like cancer, heart disease, lung disease, and diabetes.

# Defining Generative AI

To understand generative artificial intelligence (GenAI), we first need to understand how the technology builds from each of the AI subcategories listed below.



Read More: [Artificial Intelligence \(AI\)](#)

PDF Refernece URL: <https://www.drishtias.com/printpdf/sarah>

