

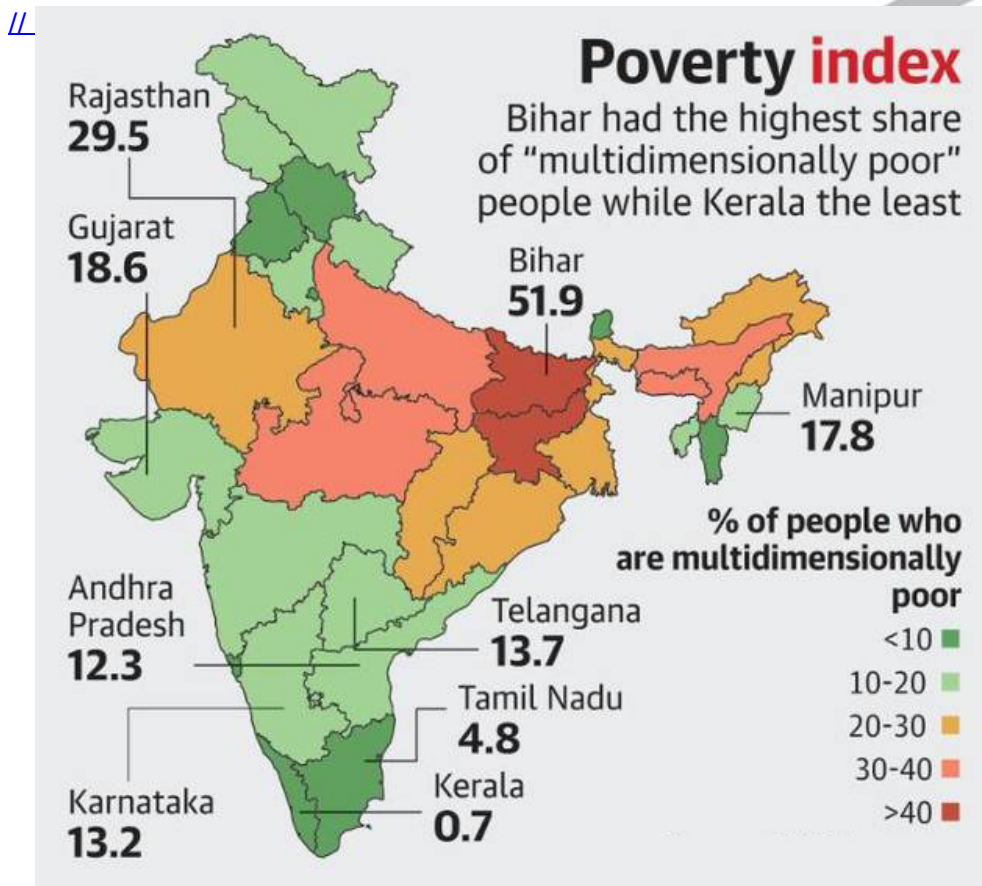


# National Multidimensional Poverty Index: NITI Ayog

## Why in News

Recently, [NITI Aayog](#) has released the **Multidimensional Poverty Index (MPI)**.

- Earlier, [Global Multidimensional Poverty Index 2021](#) was released by the [United Nations Development Programme \(UNDP\)](#) and the Oxford Poverty & Human Development Initiative (OPHI).



## Key Points

- **About:**
  - The MPI **seeks to measure poverty** across its multiple dimensions and in effect complements existing poverty statistics based on per capita consumption expenditure.
  - According to **Global MPI 2021**, India's rank is 66 out of 109 countries. The National MPI is aimed at **deconstructing the Global MPI** and creating a globally aligned and yet customised India MPI for drawing up comprehensive Reform Action Plans with the larger

goal of improving India's position in the Global MPI rankings.

- It has **three equally weighted dimensions** - health, education, and standard of living.
  - These three dimensions are **represented by 12 indicators** such as nutrition, school attendance, years of schooling, drinking water, sanitation, housing, bank accounts among others.

#### ▪ Methodology & Data:

- The national MPI measure **uses the globally accepted and robust methodology** developed by the **Oxford Poverty and Human Development Initiative (OPHI)** and the **UNDP**.
- This baseline report of the **national MPI measure** is based on the reference period of 2015-16 of the [National Family Health Survey \(NFHS-4\)](#).

- **NFHS-4** data has been used to derive an idea of baseline multidimensional poverty **to know the situation on ground before the full rollout of various central government schemes**.
- NFHS-4 **precedes the full roll out of (central government's) flagship schemes** on housing, drinking water, sanitation, electricity, cooking fuel, financial inclusion, and other major efforts towards improving school attendance, nutrition, mother and child health, etc.
- However, it has to be noted here that the **NFHS-5 data suggests improvement** in access to clean cooking fuel, sanitation, and electricity which translates to reduction in deprivation.

#### ▪ Findings of the Index:

##### ◦ Poverty Levels:

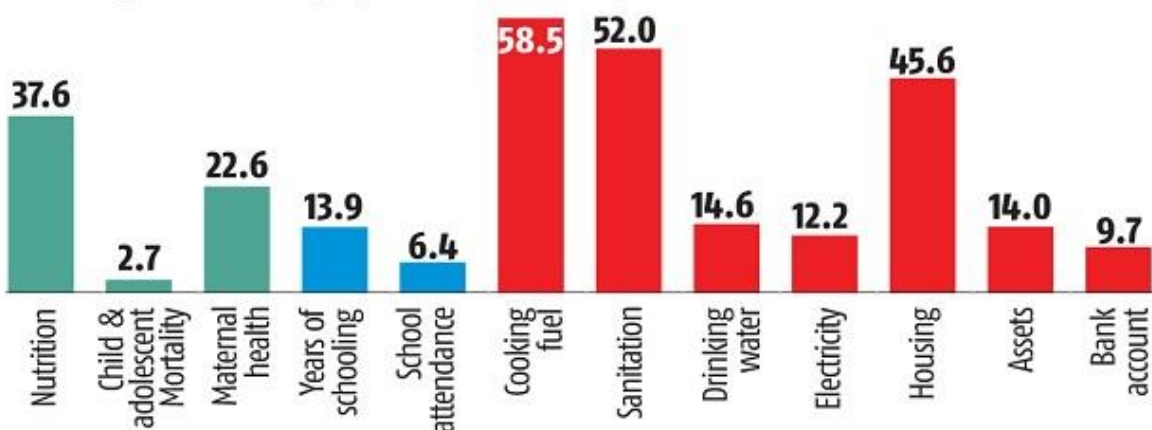
- **Bihar has the highest proportion of people** of the state's population followed by Jharkhand and Uttar Pradesh who are multidimensionally poor.
- **Kerala registered the lowest population poverty levels**, followed by Puducherry, Lakshadweep, Goa and Sikkim.

##### ◦ Malnourished People:

- **Bihar also has the highest number of malnourished people** followed by Jharkhand, Madhya Pradesh, Uttar Pradesh, and Chhattisgarh.

## THE OTHER INDIA

Percentage of the total population that is deprived in each indicator



#### ▪ Significance of the Index:

##### ◦ Contribution towards Instituting Public Policy Tool:

- The development of the Index is an important contribution towards **instituting a**

**public policy tool** which monitors multidimensional poverty, informs evidence-based and focused interventions, thereby ensuring that **no one is left behind**.

- **Presents Overall Picture of Poverty:**

- This presents an overall picture of poverty in the country, while also **enabling closer and more in-depth analyses of areas of interest such as regions - state or districts**, and specific sectors and complements the existing monetary poverty statistics.

- **Help Achieving SDGs Goals:**

- It is a **contribution towards measuring progress** towards target 1.2 of the **Sustainable Development Goals (SDGs)** which aims at reducing “at least by half the proportion of men, women and children of all ages living in poverty in all its dimensions.

- **Related Government Initiatives:**

- **National Rural Livelihood Mission (NRLM)**
- **The Mahatma Gandhi National Rural Employment Guarantee Act 2005 (MNREGA)**
- **Pradhan Mantri Awaas Yojana-Gramin (PMAY-G)**
- **Public Distribution System (PDS)**
- **Pradhan Mantri Awas Yojana (PMAY)**
- **Jal Jeevan Mission (JJM)**
- **Swachh Bharat Mission (SBM)**
- **Pradhan Mantri Sahaj Bijli Har Ghar Yojana (Saubhagya)**
- **Pradhan Mantri Ujjwala Yojana (PMUY)**

**Source: TH**

PDF Refernece URL: <https://www.drishtias.com/printpdf/national-multidimensional-poverty-index-niti-ayog>

