



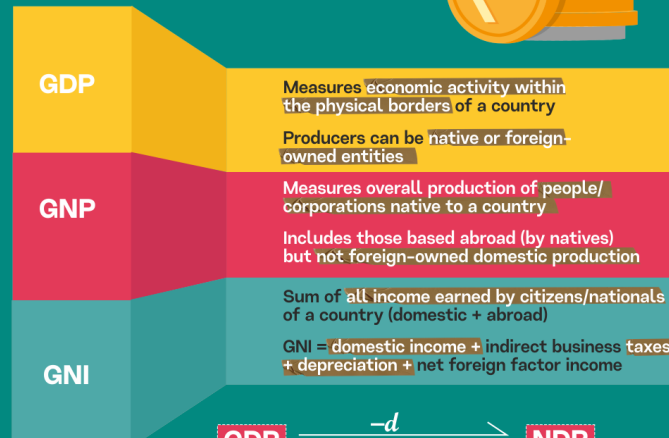
GDP and Related Terms

GDP AND RELATED TERMS



GROSS DOMESTIC PRODUCT (GDP):

- Total monetary value of all finished goods/services produced within a country in one year
- 3 methods to calculate GDP - expenditures, production, income Method
- Provides an economic snapshot to estimate a country's economy/growth rate
- GDP is not an accurate measure of the overall living standard/ well-being of a country
- $GDP = \text{Goods and services consumed (C)} + \text{Investments (I)} + \text{Govt expenditures (G)} + (\text{Exports (X)} - \text{Imports (M)})$



Nominal GDP (NGDP)

- GDP at current prices
- Includes inflation/pace of rising prices
- Used to compare different quarters of output (in same year)

Real GDP (RGDP)

- Inflation-adjusted GDP
- More accurate reflection of the output of an economy than NGDP
- Used to compare GDP of 2 or more years
- Calculated using a GDP Price Deflator
($RGDP = NGDP \div \text{GDP Deflator}$)

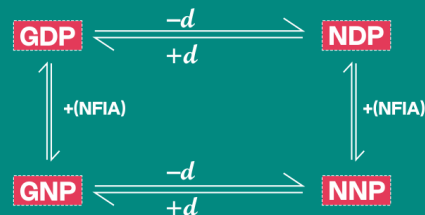
$$\text{GDP Price Deflator} = (NGDP \div RGDP) \times 100$$

Example: Assume a country that only produces bread

Year 2021: It produced 100 units of bread @ price Rs 10 (each)
Then, GDP @ current price - Rs 1000

Year 2022: It produced 110 units of bread @ price Rs 15 (each)
Then, GDP @ current price - Rs 1650

RGDP for year 2022 (base year - 2021) = $110 \times Rs\ 10 = Rs\ 1,100$
Here, **GDP Deflator** would be - $1,650 \div 1,100 = 1.50$ (or 150%)



d = depreciation **NFIA** = Net Factor Income from Abroad
NNP = Net National Product **NDP** = Net Domestic Product

- **Factor Cost (FC)** = Total value of the inputs that go into manufacturing a good
- **Market Price (MP)** = Factor Cost + Indirect Taxes - Subsidies
- **GDP at FC** = GDP at MP + Subsidies - Indirect Taxes
- **GDP at MP** = $GVA \times MP$
- **GDP at MP** is the measure of GDP in India
- **Gross Value Added (GVA)** = GDP + subsidies on products - taxes on products



Drishti IAS

